

## Test Report

No.: CANEC24015025803

Date: Jul 24, 2024

Page 1 of 23

Client Name: KINGBOARD LAMINATES HOLDINGS LIMITED

Client Address: 23/F., DELTA HOUSE, NO.3 ON YIU STREET, SHATIN, N.T. HONG KONG.

Sample Name: KB-3152

Model No.: KB-3152

Client Ref. Information: KB-2150G

The above sample(s) and information were provided by the client.

SGS Job No.: GZP24-022805

Sample Receiving Date: Jul 10, 2024

Testing Period: Jul 10, 2024 ~ Jul 19, 2024

Test Requested: Select test(s) as requested by the client.

Test Method(s): Please refer to next page(s).

Test Result(s): Please refer to next page(s).

Test Requirement	Conclusion
EU RoHS Directive (EU) 2015/863 amending Annex II to Directive 2011/65/EU - Lead, Mercury, Cadmium, Hexavalent chromium, Polybrominated biphenyls (PBB), Polybrominated diphenyl ethers (PBDE), Bis(2-ethylhexyl) phthalate (DEHP), Butyl benzyl phthalate (BBP), Dibutyl phthalate (DBP) and Diisobutyl phthalate (DIBP)	Pass
Tetrabromobisphenol A (TBBP-A)	See Results
Alkanes C14-C17, chloro (medium- chain chlorinated paraffins) (MCCPs)	See Results
AfPS GS 2019:01 PAK-Polycyclic Aromatic Hydrocarbons (PAHs)	See Results
Persistent, Bioaccumulative, and Toxic (PBT) Chemicals under US EPA Toxic Substances Control Act (TSCA) Section 6(h)	Pass
Halogen	See Results
Element(s)	See Results
Red Phosphorus	See Results

Signed for and on behalf of  
SGS-CSTC Standards Technical Services Co., Ltd. Guangzhou Branch

Allie Chen

Allie Chen  
Approved Signatory

scan to see the report



54B819F3



SGS-CSTC Standards Technical Services Co., Ltd.  
Guangzhou Branch

Unless otherwise agreed in writing, this document is issued by the Company subject to its General Conditions of Service printed overleaf, available on request or accessible at <https://www.sgs.com/en/Terms-and-Conditions>. Attention is drawn to the limitation of liability, indemnification and jurisdiction issues defined therein. Any holder of this document is advised that information contained hereon reflects the Company's findings at the time of its intervention only and within the limits of Client's instructions, if any. The Company's sole responsibility is to its Client and this document does not exonerate parties to a transaction from exercising all their rights and obligations under the transaction documents. This document cannot be reproduced except in full, without prior written approval of the Company. Any unauthorized alteration, forgery or falsification of the content or appearance of this document is unlawful and offenders may be prosecuted to the fullest extent of the law. Unless otherwise stated the results shown in this test report refer only to the sample(s) tested.  
Attention: To check the authenticity of testing /inspection report & certificate, please contact us at telephone: (86-755) 8307 1443, or email: [CN.Doccheck@sgs.com](mailto:CN.Doccheck@sgs.com)

No.198, Kezhu Road, Science City, Economic & Technological Development Area, Guangzhou, Guangdong, China 510663  
中国·广东·广州高新技术产业开发区科学城科珠路198号 邮编: 510663

t (86-20) 82155555 www.sgsgroup.com.cn  
t (86-20) 82155555 sgs.china@sgs.com

Member of the SGS Group (SGS SA)

# Test Report

No.: CANEC24015025803

Date: Jul 24, 2024

Page 2 of 23

Test Requirement	Conclusion
Sulfur	See Results
Chlorinated Paraffins	See Results
Formaldehyde	See Results
Hexabromocyclododecane (HBCDD)	See Results
Organic-Tin compounds	See Results
Phthalates	See Results

## Test Result(s):

### Test Part Description:

SN ID	Sample No.	SGS Sample ID	Description
SN1	A1	CAN24-0150258-0001.C001	Copper clad brown laminate(only test part without red "KB" printing)

### Remarks:

- (1) 1 mg/kg = 1 ppm = 0.0001%
- (2) MDL = Method Detection Limit
- (3) ND = Not Detected (< MDL)
- (4) "-" = Not Regulated

**EU RoHS Directive (EU) 2015/863 amending Annex II to Directive 2011/65/EU - Lead, Mercury, Cadmium, Hexavalent chromium, Polybrominated biphenyls (PBB), Polybrominated diphenyl ethers (PBDE), Bis(2-ethylhexyl) phthalate (DEHP), Butyl benzyl phthalate (BBP), Dibutyl phthalate (DBP) and Diisobutyl phthalate (DIBP)**

**Test Method:** With reference to IEC 62321-4:2013+AMD1:2017, IEC 62321-5:2013, IEC 62321-7-2:2017, IEC 62321-6:2015 and IEC 62321-8:2017, analysis was performed by ICP-OES/AAS, UV-Vis and GC-MS.

Test Item(s)	Limit	Unit(s)	MDL	A1
Lead (Pb)	1000	mg/kg	2	ND
Mercury (Hg)	1000	mg/kg	2	ND
Cadmium (Cd)	100	mg/kg	2	ND
Hexavalent Chromium (Cr(VI))	1000	mg/kg	8	ND
Polybromobiphenyl (PBB)	1000	mg/kg	-	ND
Monobrominated biphenyl (MonoBB)	-	mg/kg	5	ND
Dibrominated biphenyl (DiBB)	-	mg/kg	5	ND
Tribrominated biphenyl (TriBB)	-	mg/kg	5	ND
Tetrabrominated biphenyl (TetraBB)	-	mg/kg	5	ND
Pentabrominated biphenyl (PentaBB)	-	mg/kg	5	ND
Hexabrominated biphenyl (HexaBB)	-	mg/kg	5	ND
Heptabrominated biphenyl (HeptaBB)	-	mg/kg	5	ND
Octabrominated biphenyl (OctaBB)	-	mg/kg	5	ND
Nonabrominated biphenyl (NonaBB)	-	mg/kg	5	ND
Decabrominated biphenyl (DecaBB)	-	mg/kg	5	ND



SGS-CT Standards Technical Service Co., Ltd.  
Guangzhou Branch Technical Laboratory

Unless otherwise agreed in writing, this document is issued by the Company subject to its General Conditions of Service printed overleaf, available on request or accessible at <https://www.sgs.com/en/Terms-and-Conditions>. Attention is drawn to the limitation of liability, indemnification and jurisdiction issues defined therein. Any holder of this document is advised that information contained hereon reflects the Company's findings at the time of its intervention only and within the limits of Client's instructions, if any. The Company's sole responsibility is to its Client and this document does not exonerate parties to a transaction from exercising all their rights and obligations under the transaction documents. This document cannot be reproduced except in full, without prior written approval of the Company. Any unauthorized alteration, forgery or falsification of the content or appearance of this document is unlawful and offenders may be prosecuted to the fullest extent of the law. Unless otherwise stated the results shown in this test report refer only to the sample(s) tested.  
**Attention: To check the authenticity of testing /inspection report & certificate, please contact us at telephone: (86-755) 8307 1443, or email: [CN.Doccheck@sgs.com](mailto:CN.Doccheck@sgs.com)**

No.198, Kezhu Road, Science City, Economic & Technological Development Area, Guangzhou, Guangdong, China 510663  
中国·广东·广州高新技术产业开发区科学城科珠路198号 邮编: 510663

t (86-20) 82155555 [www.sgsgroup.com.cn](http://www.sgsgroup.com.cn)  
t (86-20) 82155555 [sgs.china@sgs.com](mailto:sgs.china@sgs.com)

Member of the SGS Group (SGS SA)

## Test Report

No.: CANEC24015025803

Date: Jul 24, 2024

Page 3 of 23

Test Item(s)	Limit	Unit(s)	MDL	A1
Polybromodiphenyl ether(PBDE)	1000	mg/kg	-	ND
Monobrominated diphenyl ether (MonoBDE)	-	mg/kg	5	ND
Dibrominated diphenyl ether (DiBDE)	-	mg/kg	5	ND
Tribrominated diphenyl ether (TriBDE)	-	mg/kg	5	ND
Tetrabrominated diphenyl ether (TetraBDE)	-	mg/kg	5	ND
Pentabrominated diphenyl ether (PentaBDE)	-	mg/kg	5	ND
Hexabrominated diphenyl ether (HexaBDE)	-	mg/kg	5	ND
Heptabrominated diphenyl ether (HeptaBDE)	-	mg/kg	5	ND
Octabrominated diphenyl ether (OctaBDE)	-	mg/kg	5	ND
Nonabrominated diphenyl ether (NonaBDE)	-	mg/kg	5	ND
Decabrominated diphenyl ether (DecaBDE)	-	mg/kg	5	ND
Bis(2-ethylhexyl) phthalate (DEHP)	1000	mg/kg	50	ND
Butyl benzyl phthalate (BBP)	1000	mg/kg	50	ND
Dibutyl phthalate (DBP)	1000	mg/kg	50	ND
Diisobutyl phthalate (DIBP)	1000	mg/kg	50	ND

### Notes:

- (1) The maximum permissible limit is quoted from RoHS Directive (EU) 2015/863.
- (2) IEC 62321 series is equivalent to EN 62321 series.
- (3) The restriction of DEHP, BBP, DBP and DIBP shall apply to medical devices, including in vitro medical devices, and monitoring and control instruments, including industrial monitoring and control instruments, from 22 July 2021.

### Tetrabromobisphenol A (TBBP-A)

**Test Method:** With reference to US EPA 3550C: 2007, analysis was performed by GC-MS or LC-MS or LC-MS/MS.

Test Item(s)	CAS No.	Unit(s)	MDL	A1
Tetrabromobisphenol A(TBBP-A)	79-94-7	mg/kg	5	ND

### Alkanes C14-C17, chloro (medium- chain chlorinated paraffins) (MCCPs)

**Test Method:** With reference to ISO 22818:2021, analysis was performed by GC-NCI-MS.

Test Item(s)	CAS No.	Unit(s)	MDL	A1
Alkanes C <sub>14</sub> -C <sub>17</sub> , chloro (medium- chain chlorinated paraffins) (MCCPs)	85535-85-9 and others	mg/kg	50	ND

### AfPS GS 2019:01 PAK-Polycyclic Aromatic Hydrocarbons (PAHs)



SGS-CTI Standards Technical Services Co., Ltd.  
Guangzhou Branch / 广州分公司

Unless otherwise agreed in writing, this document is issued by the Company subject to its General Conditions of Service printed overleaf, available on request or accessible at <https://www.sgs.com/en/Terms-and-Conditions>. Attention is drawn to the limitation of liability, indemnification and jurisdiction issues defined therein. Any holder of this document is advised that information contained hereon reflects the Company's findings at the time of its intervention only and within the limits of Client's instructions, if any. The Company's sole responsibility is to its Client and this document does not exonerate parties to a transaction from exercising all their rights and obligations under the transaction documents. This document cannot be reproduced except in full, without prior written approval of the Company. Any unauthorized alteration, forgery or falsification of the content or appearance of this document is unlawful and offenders may be prosecuted to the fullest extent of the law. Unless otherwise stated the results shown in this test report refer only to the sample(s) tested.  
**Attention: To check the authenticity of testing / inspection report & certificate, please contact us at telephone: (86-755) 8307 1443, or email: CN.Doccheck@sgs.com**

No.198, Kezhu Road, Science City, Economic & Technological Development Area, Guangzhou, Guangdong, China 510663  
中国·广东·广州高新技术产业开发区科学城科珠路198号 邮编: 510663

t (86-20) 82155555 www.sgsgroup.com.cn  
t (86-20) 82155555 sgs.china@sgs.com

Member of the SGS Group (SGS SA)

# Test Report

No.: CANEC24015025803

Date: Jul 24, 2024

Page 4 of 23

Test Method: With reference to AfPS GS 2019:01 PAK, analysis was performed by GC-MS.

Test Item(s)	CAS No.	Unit(s)	MDL	A1
Benzo(a)pyrene(BaP)	50-32-8	mg/kg	0.1	ND
Benzo(e)pyrene(BeP)	192-97-2	mg/kg	0.1	ND
Benzo(a)anthracene(BaA)	56-55-3	mg/kg	0.1	ND
Benzo(b)Fluoranthene(BbF)	205-99-2	mg/kg	0.1	ND
Benzo(j)fluoranthene(BjF)	205-82-3	mg/kg	0.1	ND
Benzo(k)Fluoranthene(BkF)	207-08-9	mg/kg	0.1	ND
Chrysene(CHR)	218-01-9	mg/kg	0.1	ND
Dibenzo(a,h)Anthracene(DBA)	53-70-3	mg/kg	0.1	ND
Benzo(g,h,i)perylene(BPE)	191-24-2	mg/kg	0.1	ND
Indeno(1,2,3-c,d)pyrene(IPY)	193-39-5	mg/kg	0.1	ND
Phenanthrene(PHE)	85-01-8	mg/kg	0.1	ND
Pyrene(PYR)	129-00-0	mg/kg	0.1	ND
Anthracene(ANT)	120-12-7	mg/kg	0.1	ND
Fluoranthene(FLT)	206-44-0	mg/kg	0.1	ND
Sum of Phenanthrene(PHE), Pyrene(PYR), Anthracene(ANT), Fluoranthene(FLT)	-	mg/kg	-	ND
Naphthalene(NAP)	91-20-3	mg/kg	0.1	ND
Sum of 15 PAHs	-	mg/kg	-	ND
Material Category	-	-	-	-

## Notes:

### AfPS (German commission for Product Safety) : PAHs requirements

Parameter	Category 1	Category 2		Category 3	
	Materials intended to be placed in the mouth, or materials coming into long-term contact with skin (more than 30s) during the intended use -in toys according to Directive 2009/48/EC or -for the use by children <sup>a,b</sup> up to 3 years of age.	Materials not covered by category 1, coming into long-term contact (more than 30s) or short-term repetitive contact <sup>c</sup> with skin during the intended or foreseeable use <sup>d</sup> .		Materials covered neither by category 1 nor by category 2, coming into short-term contact (up to 30s) with skin during the intended or foreseeable use.	
		a. use by children	b. other consumer products	a. use by children	b. other consumer products
Benzo(a)pyrene (BaP) mg/kg	< 0.2	< 0.2	< 0.5	< 0.5	< 1



SGS-CSI Standards Technical Service Co., Ltd.  
Guangzhou Branch Technical Laboratory

Unless otherwise agreed in writing, this document is issued by the Company subject to its General Conditions of Service printed overleaf, available on request or accessible at <https://www.sgs.com/en/Terms-and-Conditions>. Attention is drawn to the limitation of liability, indemnification and jurisdiction issues defined therein. Any holder of this document is advised that information contained hereon reflects the Company's findings at the time of its intervention only and within the limits of Client's instructions, if any. The Company's sole responsibility is to its Client and this document does not exonerate parties to a transaction from exercising all their rights and obligations under the transaction documents. This document cannot be reproduced except in full, without prior written approval of the Company. Any unauthorized alteration, forgery or falsification of the content or appearance of this document is unlawful and offenders may be prosecuted to the fullest extent of the law. Unless otherwise stated the results shown in this test report refer only to the sample(s) tested.  
Attention: To check the authenticity of testing / inspection report & certificate, please contact us at telephone: (86-755) 8307 1443, or email: [CN.Doccheck@sgs.com](mailto:CN.Doccheck@sgs.com)

No.198, Kezhu Road, Science City, Economic & Technological Development Area, Guangzhou, Guangdong, China 510663  
中国·广东·广州高新技术产业开发区科学城科珠路198号 邮编: 510663

t (86-20) 82155555 www.sgsgroup.com.cn  
t (86-20) 82155555 sgs.china@sgs.com



## Test Report

No.: CANEC24015025803

Date: Jul 24, 2024

Page 5 of 23

Benzo(e)pyrene (BeP) mg/kg	< 0.2	< 0.2	< 0.5	< 0.5	< 1
Benzo(a)anthracene (BaA) mg/kg	< 0.2	< 0.2	< 0.5	< 0.5	< 1
Benzo(b)fluoranthene (BbF) mg/kg	< 0.2	< 0.2	< 0.5	< 0.5	< 1
Benzo(j)fluoranthene (BjF) mg/kg	< 0.2	< 0.2	< 0.5	< 0.5	< 1
Benzo(k)fluoranthene (BkF) mg/kg	< 0.2	< 0.2	< 0.5	< 0.5	< 1
Chrysene (CHR) mg/kg	< 0.2	< 0.2	< 0.5	< 0.5	< 1
Dibenzo(a,h)anthracene (DBA) mg/kg	< 0.2	< 0.2	< 0.5	< 0.5	< 1
Benzo(g,h,i)perylene (BPE) mg/kg	< 0.2	< 0.2	< 0.5	< 0.5	< 1
Indeno(1,2,3-cd)pyrene (IPY) mg/kg	< 0.2	< 0.2	< 0.5	< 0.5	< 1
Phenanthrene (PHE), pyrene (PYR), anthracene (ANT), fluoranthene (FLT), mg/kg	< 1 Sum	< 5 Sum	< 10 Sum	< 20 Sum	< 50 Sum
Naphthalene (NAP) mg/kg	< 1	< 2	< 10	< 20	< 50
<b>Sum of 15 PAHs</b>	< 1	< 5	< 10	< 20	< 50

### Notes:

<sup>a</sup> A "Child" is legally defined as a person before reaching the age of 14 years.

<sup>b</sup> Use by children includes both active and passive contact by children.

<sup>c</sup> Definition "short-term repetitive contact" taken from REACH Annex XVII entry 50 amendment (Regulation (EC) No.1272/2013)

<sup>d</sup> According to the definition of the German Product Safety Act (ProdSG) (chapter 1 Article 2 No. 28) "foreseeable use" shall mean the use of a product in a manner that the person placing it on the market, has not intended, but which could be reasonably foreseeable.

### Remark:

The German committee on Product Safety (AfPS) published a new PAHs document (AfPS GS 2019:01 PAK) on April 10, 2020, which will be binding for the issue of GS mark certificate from July 1, 2020.

### **Persistent, Bioaccumulative, and Toxic (PBT) Chemicals under US EPA Toxic Substances Control Act (TSCA) Section 6(h)**

**Test Method:** SGS In-house method (SGS-CCL-TOP-149-07, With reference to US EPA Method 3550C:2007), analysis was performed by GC-MS.



SGS-CST Standards Technical Services Co., Ltd.  
Guangzhou Branch

Unless otherwise agreed in writing, this document is issued by the Company subject to its General Conditions of Service printed overleaf, available on request or accessible at <https://www.sgs.com/en/Terms-and-Conditions>. Attention is drawn to the limitation of liability, indemnification and jurisdiction issues defined therein. Any holder of this document is advised that information contained hereon reflects the Company's findings at the time of its intervention only and within the limits of Client's instructions, if any. The Company's sole responsibility is to its Client and this document does not exonerate parties to a transaction from exercising all their rights and obligations under the transaction documents. This document cannot be reproduced except in full, without prior written approval of the Company. Any unauthorized alteration, forgery or falsification of the content or appearance of this document is unlawful and offenders may be prosecuted to the fullest extent of the law. Unless otherwise stated the results shown in this test report refer only to the sample(s) tested.

Attention: To check the authenticity of testing / inspection report & certificate, please contact us at telephone: (86-755) 8307 1443, or email: [CN.Doccheck@sgs.com](mailto:CN.Doccheck@sgs.com)

No.198, Kezhu Road, Science City, Economic & Technological Development Area, Guangzhou, Guangdong, China 510663  
中国·广东·广州高新技术产业开发区科学城科珠路198号 邮编: 510663

t (86-20) 82155555 [www.sgsgroup.com.cn](http://www.sgsgroup.com.cn)  
t (86-20) 82155555 [sgs.china@sgs.com](mailto:sgs.china@sgs.com)

Member of the SGS Group (SGS SA)

# Test Report

No.: CANEC24015025803

Date: Jul 24, 2024

Page 6 of 23

Test Item(s)	CAS No.	Limit	Unit(s)	MDL	A1
Decabromodiphenyl ether (DecaBDE) <sup>Δ1</sup>	1163-19-5	Prohibited	mg/kg	5	ND
Phenol, isopropylated phosphate (3:1) (PIP 3:1) <sup>Δ2</sup>	68937-41-7	Prohibited	mg/kg	5	ND
2,4,6-Tris(tert-butyl)phenol (2,4,6-TTBP) <sup>Δ3</sup>	732-26-3	3000	mg/kg	5	ND
Hexachlorobutadiene (HCBd)	87-68-3	Prohibited	mg/kg	5	ND
Pentachlorothiophenol (PCTP)	133-49-3	10000	mg/kg	5	ND
<b>Conclusion</b>					<b>Pass</b>

## Notes:

(1) The regulation is available at the following link.

<https://www.epa.gov/assessing-and-managing-chemicals-under-tsca/persistent-bioaccumulative-and-toxic-pbt-chemicals-under>

(2) <sup>Δ1</sup>: The submitted sample is exempted if it is plastic for recycling from products or articles containing Deca-BDE.

(3) <sup>Δ2</sup>: The submitted sample is exempted from the regulated scope if it is anyone of the following:

- Hydraulic fluids for aviation or military industry;
- Lubricants and grease;
- New and replacement parts for motor and aerospace vehicles;
- Intermediate in a closed system to produce cyanoacrylate adhesive;
- Specialized engine air filters for locomotive and marine applications;
- Plastic for recycling from products or articles containing PIP (3:1);
- Finished products or articles made of plastic recycled from products or articles containing PIP (3:1).

(4) <sup>Δ3</sup>: The submitted sample is out of the regulated scope if it is not oil or lubricant.

## Halogen

**Test Method:** With reference to EN 14582:2016, analysis was performed by IC.

Test Item(s)	Unit(s)	MDL	A1
Fluorine(F)	mg/kg	20	ND
Chlorine(Cl)	mg/kg	50	101
Bromine(Br)	mg/kg	50	ND
Iodine(I)	mg/kg	50	ND

## Element(s)

**Test Method:** With reference to US EPA 3052:1996, analysis was performed by ICP-OES/AAS.

Test Item(s)	Unit(s)	MDL	A1
Arsenic(As)	mg/kg	10	ND
Beryllium(Be)	mg/kg	5	ND
Nickel (Ni)	mg/kg	5	ND
Antimony(Sb)	mg/kg	10	ND

## Red Phosphorus



SGS-CSI Standards Technical Service Co., Ltd.  
Guangzhou Branch / 广州分公司

Unless otherwise agreed in writing, this document is issued by the Company subject to its General Conditions of Service printed overleaf, available on request or accessible at <https://www.sgs.com/en/Terms-and-Conditions>. Attention is drawn to the limitation of liability, indemnification and jurisdiction issues defined therein. Any holder of this document is advised that information contained hereon reflects the Company's findings at the time of its intervention only and within the limits of Client's instructions, if any. The Company's sole responsibility is to its Client and this document does not exonerate parties to a transaction from exercising all their rights and obligations under the transaction documents. This document cannot be reproduced except in full, without prior written approval of the Company. Any unauthorized alteration, forgery or falsification of the content or appearance of this document is unlawful and offenders may be prosecuted to the fullest extent of the law. Unless otherwise stated the results shown in this test report refer only to the sample(s) tested.  
Attention: To check the authenticity of testing / inspection report & certificate, please contact us at telephone: (86-755) 8307 1443, or email: [CN.Doccheck@sgs.com](mailto:CN.Doccheck@sgs.com)

No.198, Kezhu Road, Science City, Economic & Technological Development Area, Guangzhou, Guangdong, China 510663  
中国·广东·广州高新技术产业开发区科学城科珠路198号 邮编: 510663

t (86-20) 82155555 [www.sgs.com](http://www.sgs.com)  
t (86-20) 82155555 [sgs.china@sgs.com](mailto:sgs.china@sgs.com)

Member of the SGS Group (SGS SA)

## Test Report

No.: CANEC24015025803

Date: Jul 24, 2024

Page 7 of 23

**Test Method:** SGS In-house method (SGS-CCL-TOP-215-01), analysis was performed by PY-GC/MS/ICP-OES / GC-MS.

Test Item(s)	CAS No.	Unit(s)	MDL	A1
Red Phosphorus	7723-14-0	mg/kg	500	ND

### Sulfur

**Test Method:** With reference to EN 14582:2016, analysis was performed by IC.

Test Item(s)	Unit(s)	MDL	A1
Sulfur (S)	mg/kg	50	ND

### Chlorinated Paraffins

**Test Method:** With reference to ISO 22818:2021, analysis was performed by GC-NCI-MS.

Test Item(s)	CAS No.	Unit(s)	MDL	A1
Short Chain Chlorinate Paraffins(SCCP)(C <sub>10</sub> -C <sub>13</sub> )	85535-84-8	mg/kg	50	ND

### Formaldehyde

**Test Method:** With reference to ISO 14184-1:2011, analysis was performed by UV-Vis.

Test Item(s)	Unit(s)	MDL	A1
Formaldehyde	mg/kg	16	ND

### Hexabromocyclododecane (HBCDD)

**Test Method:** With reference to IEC 62321-9:2021, analysis was performed by GC-MS.

Test Item(s)	CAS No.	Unit(s)	MDL	A1
Hexabromocyclododecane (HBCDD) and all major diastereoisomers identified (α-HBCDD, β-HBCDD, γ-HBCDD)	134237-50-6 /134237-51-7 /134237-52-8 /25637-99-4 /3194-55-6	mg/kg	20	ND

### Organic-Tin compounds

**Test Method:** With reference to ISO 17353:2004, analysis was performed by GC-MS.

Test Item(s)	Unit(s)	MDL	A1
Dibutyl tin(DBT)	mg/kg	0.02	ND
Tributyl tin(TBT)	mg/kg	0.02	ND
Diethyl tin(DOT)	mg/kg	0.02	ND
Triphenyl tin(TPhT)	mg/kg	0.02	ND
Tricyclohexyltin(TCyHT)	mg/kg	0.02	ND



Unless otherwise agreed in writing, this document is issued by the Company subject to its General Conditions of Service printed overleaf, available on request or accessible at <https://www.sgs.com/en/Terms-and-Conditions>. Attention is drawn to the limitation of liability, indemnification and jurisdiction issues defined therein. Any holder of this document is advised that information contained hereon reflects the Company's findings at the time of its intervention only and within the limits of Client's instructions, if any. The Company's sole responsibility is to its Client and this document does not exonerate parties to a transaction from exercising all their rights and obligations under the transaction documents. This document cannot be reproduced except in full, without prior written approval of the Company. Any unauthorized alteration, forgery or falsification of the content or appearance of this document is unlawful and offenders may be prosecuted to the fullest extent of the law. Unless otherwise stated the results shown in this test report refer only to the sample(s) tested.  
Attention: To check the authenticity of testing /inspection report & certificate, please contact us at telephone: (86-755) 8307 1443, or email: [CN.Doccheck@sgs.com](mailto:CN.Doccheck@sgs.com)

SGS-CTI Standards Technical Services Co., Ltd.  
Guangzhou Branch • Technical Laboratory

No.198, Kezhu Road, Science City, Economic & Technological Development Area, Guangzhou, Guangdong, China 510663  
中国·广东·广州高新技术产业开发区科学城科珠路198号 邮编: 510663

t (86-20) 82155555 [www.sgsgroup.com.cn](http://www.sgsgroup.com.cn)  
t (86-20) 82155555 [sgs.china@sgs.com](mailto:sgs.china@sgs.com)

## Test Report

No.: CANEC24015025803

Date: Jul 24, 2024

Page 8 of 23

Test Item(s)	Unit(s)	MDL	A1
Trimethyltin(TMT)	mg/kg	0.02	ND
Trioctyltin(TOT)	mg/kg	0.02	ND
Tri-n-propyltin(TPT)	mg/kg	0.02	ND

### Phthalates

**Test Method:** With reference to IEC 62321-8:2017, analysis was performed by GC-MS.

Test Item(s)	CAS No.	Unit(s)	MDL	A1
Dibutyl Phthalate(DBP)	84-74-2	mg/kg	50	ND
Bis-(2-ethylhexyl) Phthalate(DEHP)	117-81-7	mg/kg	50	ND
Benzyl Butyl Phthalate(BBP)	85-68-7	mg/kg	50	ND
Diisononyl Phthalate (DINP)	28553-12-0 /68515-48-0	mg/kg	50	ND
Di-n-Octyl Phthalate(DNOP)	117-84-0	mg/kg	50	ND
Diisodecyl Phthalate (DIDP)	26761-40-0 /68515-49-1	mg/kg	50	ND
Diisobutyl Phthalate(DIBP)	84-69-5	mg/kg	50	ND
Bis(2-methoxyethyl)phthalate(DMEP)	117-82-8	mg/kg	50	ND
Di-n-Hexyl Phthalate(DnHP)	84-75-3	mg/kg	50	ND
Dipentyl Phthalate (DPENP/DnPP)	131-18-0	mg/kg	50	ND
Diphenyl Phthalate(DPhP)	84-62-8	mg/kg	50	ND
Diundecyl Phthalate(DUDP)	3648-20-2	mg/kg	50	ND
Dimethyl Phthalate(DMP)	131-11-3	mg/kg	50	ND
Diethyl Phthalate(DEP)	84-66-2	mg/kg	50	ND
Dipropyl Phthalate(DPrP)	131-16-8	mg/kg	50	ND
Dicyclohexyl Phthalate(DCHP)	84-61-7	mg/kg	50	ND
Dibenzyl Phthalate(DBzP)	523-31-9	mg/kg	50	ND
Dinonyl Phthalate(DNP)	84-76-4	mg/kg	50	ND
Diisooctyl Phthalate(DIOP)	27554-26-3	mg/kg	50	ND
Diallyl Phthalate(DAP)	131-17-9	mg/kg	50	ND
n-Decyl-n-Octyl Phthalate(nDnOP)	119-07-3	mg/kg	50	ND
Di-n-Decyl Phthalate(DnDP)	84-77-5	mg/kg	50	ND
Diisopentyl Phthalate(DIPP)	605-50-5	mg/kg	50	ND
n-pentyl Isopentyl Phthalate(nPIPP)	776297-69-9	mg/kg	50	ND
Bis(2-n-butoxyethyl)Phthalate(DBEP)	117-83-9	mg/kg	50	ND
Bis(4-methyl-2-pentyl)Phthalate(BMPP)	146-50-9	mg/kg	50	ND
Bis(2-ethoxyethyl)Phthalate(DEEP)	605-54-9	mg/kg	50	ND
1,2-Benzenedicarboxylic Acid,di-C6-8-branched alkyl esters,C7-rich(DIHP)	71888-89-6	mg/kg	50	ND
Di-n-Heptyl Phthalate(DnHpP)	3648-21-3	mg/kg	50	ND
1,2-Benzenedicarboxylic Acid,Di-C7-11-Branched and Linear Alkyl Esters(DHNUP)	68515-42-4	mg/kg	50	ND
1,2-Benzenedicarboxylic Acid,Dipentyl Ester,Branched and Linear(DPP)	84777-06-0	mg/kg	50	ND
Diriddecyl Phthalate(DTDP)	119-06-2	mg/kg	50	ND
1,2-benzenedicarboxylic Acid,dihexyl ester branched and linear(DHxP)	68515-50-4	mg/kg	50	ND



SGS-CST Standards Technical Service Co., Ltd.  
Guangzhou Branch

Unless otherwise agreed in writing, this document is issued by the Company subject to its General Conditions of Service printed overleaf, available on request or accessible at <https://www.sgs.com/en/Terms-and-Conditions>. Attention is drawn to the limitation of liability, indemnification and jurisdiction issues defined therein. Any holder of this document is advised that information contained hereon reflects the Company's findings at the time of its intervention only and within the limits of Client's instructions, if any. The Company's sole responsibility is to its Client and this document does not exonerate parties to a transaction from exercising all their rights and obligations under the transaction documents. This document cannot be reproduced except in full, without prior written approval of the Company. Any unauthorized alteration, forgery or falsification of the content or appearance of this document is unlawful and offenders may be prosecuted to the fullest extent of the law. Unless otherwise stated the results shown in this test report refer only to the sample(s) tested.  
**Attention: To check the authenticity of testing / inspection report & certificate, please contact us at telephone: (86-755) 8307 1443, or email: [CN.Doccheck@sgs.com](mailto:CN.Doccheck@sgs.com)**

No.198, Kezhu Road, Science City, Economic & Technological Development Area, Guangzhou, Guangdong, China 510663  
中国·广东·广州高新技术产业开发区科学城科珠路198号 邮编: 510663

t (86-20) 82155555 [www.sgs.com](http://www.sgs.com)  
t (86-20) 82155555 [sgs.china@sgs.com](mailto:sgs.china@sgs.com)

Member of the SGS Group (SGS SA)



## Test Report

No.: CANEC24015025803

Date: Jul 24, 2024

Page 9 of 23

Test Item(s)	CAS No.	Unit(s)	MDL	A1
Di-(2-Ethylhexyl)Adipate(DEHA)	103-23-1	mg/kg	50	ND
Dioctyl Terephthalate(DOTP)	6422-86-2	mg/kg	50	ND
Diisononyl Adipate(DINA)	33703-08-1	mg/kg	50	ND
Di(2-propylheptyl)Phthalate(DPHpP)	53306-54-0	mg/kg	50	ND
Acetyl Tributyl Citrate(ATBC)	77-90-7	mg/kg	50	ND
Trioctyl trimellitate(TOTM)	3319-31-1	mg/kg	50	ND

Unless otherwise stated, the decision rule for conformity reporting is based on Binary Statement for Simple Acceptance Rule ( $w=0$ ) stated in ILAC-G8:09/2019.



SGS-CTI Standards Technical Services Co., Ltd.  
Guangzhou Branch / 广州分公司

Unless otherwise agreed in writing, this document is issued by the Company subject to its General Conditions of Service printed overleaf, available on request or accessible at <https://www.sgs.com/en/Terms-and-Conditions>. Attention is drawn to the limitation of liability, indemnification and jurisdiction issues defined therein. Any holder of this document is advised that information contained hereon reflects the Company's findings at the time of its intervention only and within the limits of Client's instructions, if any. The Company's sole responsibility is to its Client and this document does not exonerate parties to a transaction from exercising all their rights and obligations under the transaction documents. This document cannot be reproduced except in full, without prior written approval of the Company. Any unauthorized alteration, forgery or falsification of the content or appearance of this document is unlawful and offenders may be prosecuted to the fullest extent of the law. Unless otherwise stated the results shown in this test report refer only to the sample(s) tested.  
Attention: To check the authenticity of testing / inspection report & certificate, please contact us at telephone: (86-755) 8307 1443, or email: [CN.Doccheck@sgs.com](mailto:CN.Doccheck@sgs.com)

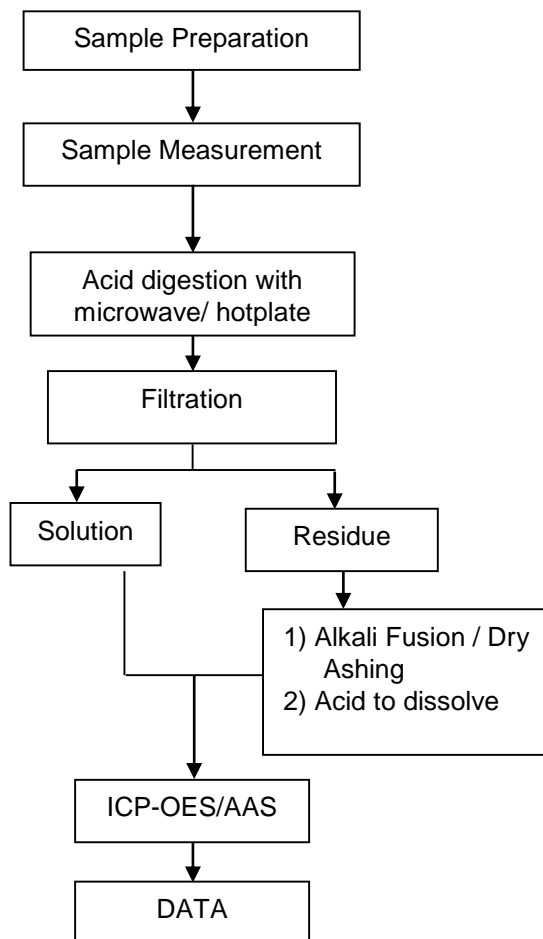
No.198, Kezhu Road, Science City, Economic & Technological Development Area, Guangzhou, Guangdong, China 510663  
中国·广东·广州高新技术产业开发区科学城科珠路198号 邮编: 510663

t (86-20) 82155555 [www.sgsgroup.com.cn](http://www.sgsgroup.com.cn)  
t (86-20) 82155555 [sgs.china@sgs.com](mailto:sgs.china@sgs.com)

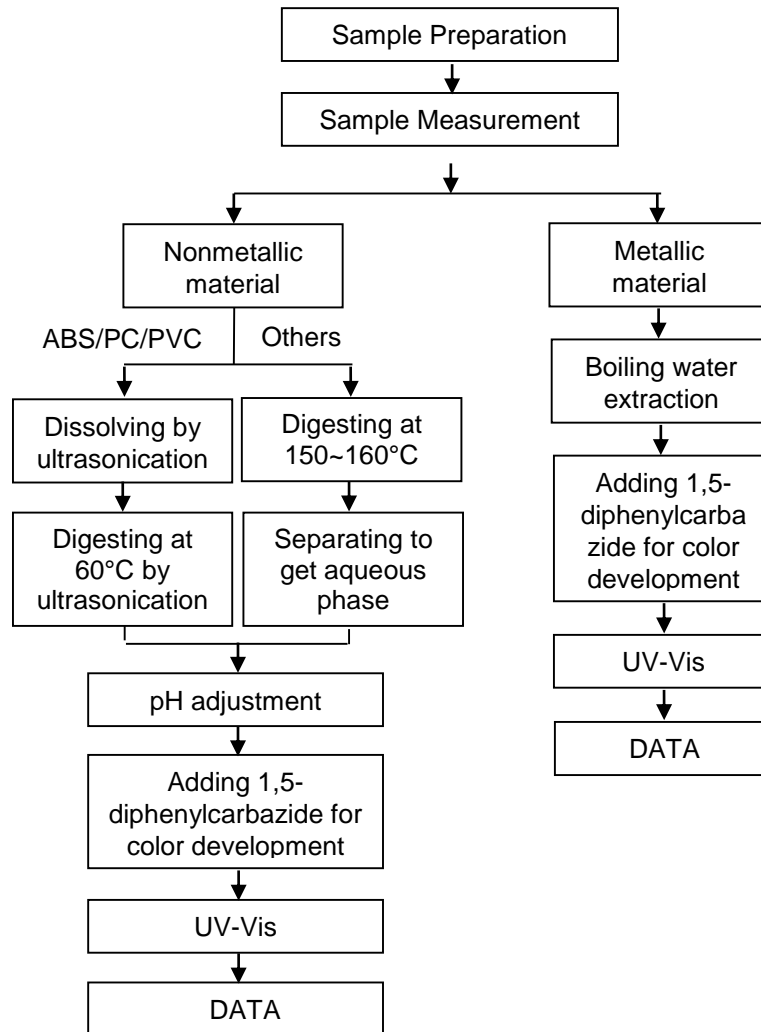
Member of the SGS Group (SGS SA)

### Elements Testing Flow Chart

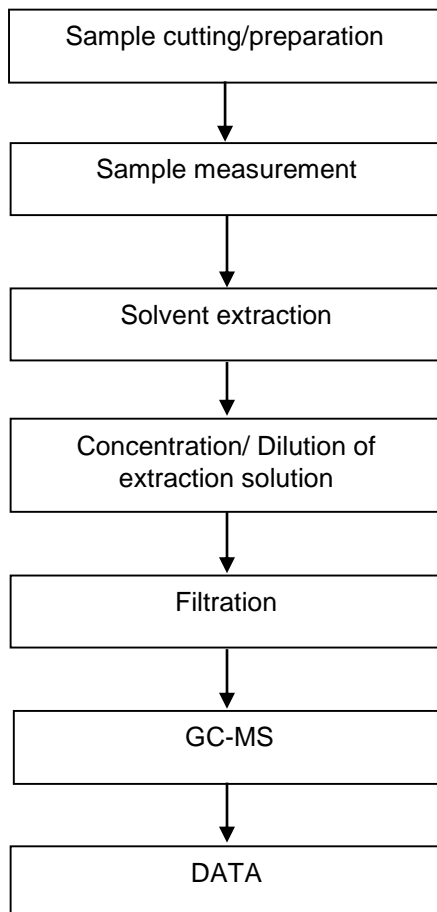
These samples were dissolved totally by pre-conditioning method according to below flow chart.



### Hexavalent Chromium (Cr(VI)) Testing Flow Chart

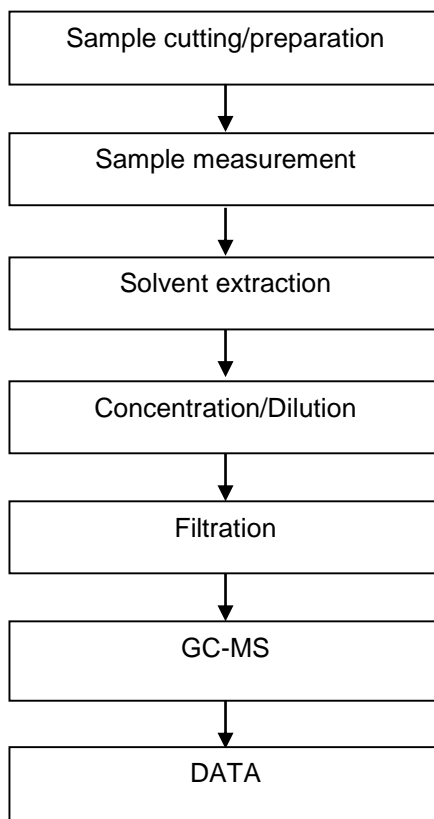


## PBB/PBDE Testing Flow Chart





## Phthalates Testing Flow Chart



SGS-CSTC Standards Technical Services Co., Ltd.  
Guangzhou Branch Technical Laboratory

Unless otherwise agreed in writing, this document is issued by the Company subject to its General Conditions of Service printed overleaf, available on request or accessible at <https://www.sgs.com/en/Terms-and-Conditions>. Attention is drawn to the limitation of liability, indemnification and jurisdiction issues defined therein. Any holder of this document is advised that information contained hereon reflects the Company's findings at the time of its intervention only and within the limits of Client's instructions, if any. The Company's sole responsibility is to its Client and this document does not exonerate parties to a transaction from exercising all their rights and obligations under the transaction documents. This document cannot be reproduced except in full, without prior written approval of the Company. Any unauthorized alteration, forgery or falsification of the content or appearance of this document is unlawful and offenders may be prosecuted to the fullest extent of the law. Unless otherwise stated the results shown in this test report refer only to the sample(s) tested.  
**Attention: To check the authenticity of testing /inspection report & certificate, please contact us at telephone: (86-755) 8307 1443, or email: [CN.Doccheck@sgs.com](mailto:CN.Doccheck@sgs.com)**

No.198, Kezhu Road, Science City, Economic & Technological Development Area, Guangzhou, Guangdong, China 510663  
中国·广东·广州高新技术产业开发区科学城科珠路198号 邮编: 510663

t (86-20) 82155555 [www.sgsgroup.com.cn](http://www.sgsgroup.com.cn)  
t (86-20) 82155555 [sgs.china@sgs.com](mailto:sgs.china@sgs.com)

## Test Report

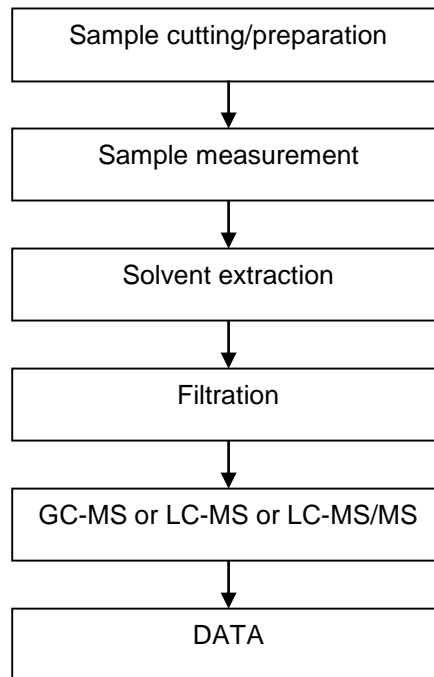
### ATTACHMENTS

No.: CANEC24015025803

Date: Jul 24, 2024

Page 14 of 23

### TBBP-A Testing Flow Chart



SGS-CT Standards Technical Service Co., Ltd.  
Guangzhou Branch Technical Laboratory

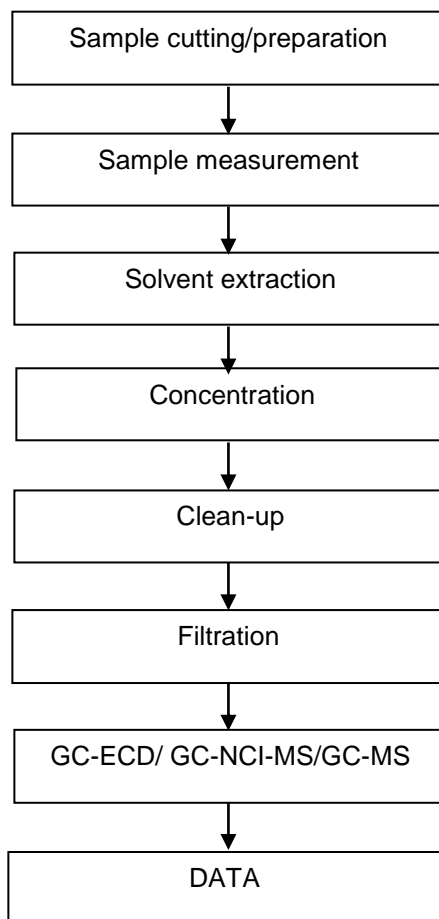
Unless otherwise agreed in writing, this document is issued by the Company subject to its General Conditions of Service printed overleaf, available on request or accessible at <https://www.sgs.com/en/Terms-and-Conditions>. Attention is drawn to the limitation of liability, indemnification and jurisdiction issues defined therein. Any holder of this document is advised that information contained hereon reflects the Company's findings at the time of its intervention only and within the limits of Client's instructions, if any. The Company's sole responsibility is to its Client and this document does not exonerate parties to a transaction from exercising all their rights and obligations under the transaction documents. This document cannot be reproduced except in full, without prior written approval of the Company. Any unauthorized alteration, forgery or falsification of the content or appearance of this document is unlawful and offenders may be prosecuted to the fullest extent of the law. Unless otherwise stated the results shown in this test report refer only to the sample(s) tested.  
Attention: To check the authenticity of testing /inspection report & certificate, please contact us at telephone: (86-755) 8307 1443, or email: [CN.Doccheck@sgs.com](mailto:CN.Doccheck@sgs.com)

No.198, Kezhu Road, Science City, Economic & Technological Development Area, Guangzhou, Guangdong, China 510663  
中国·广东·广州高新技术产业开发区科学城科珠路198号 邮编: 510663

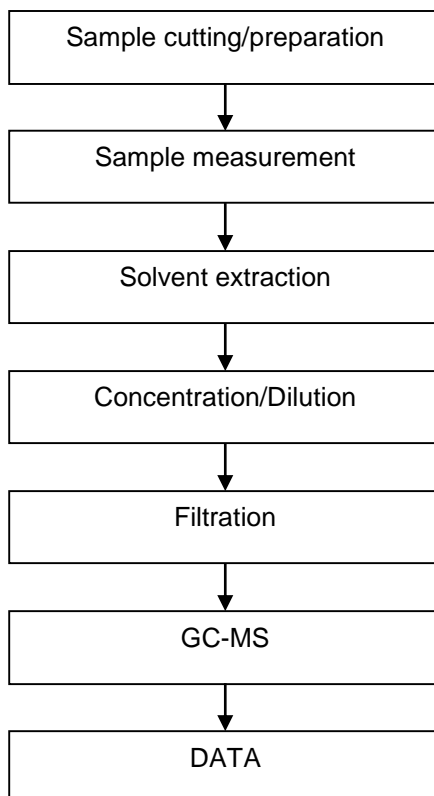
t (86-20) 82155555 [www.sgsgroup.com.cn](http://www.sgsgroup.com.cn)  
t (86-20) 82155555 [sgs.china@sgs.com](mailto:sgs.china@sgs.com)

Member of the SGS Group (SGS SA)

## Chlorinated Paraffin Testing Flow Chart



## PAHs Testing Flow Chart



SGS-CSTC Standards Technical Services Co., Ltd.  
Guangzhou Branch Technical Laboratory

Unless otherwise agreed in writing, this document is issued by the Company subject to its General Conditions of Service printed overleaf, available on request or accessible at <https://www.sgs.com/en/Terms-and-Conditions>. Attention is drawn to the limitation of liability, indemnification and jurisdiction issues defined therein. Any holder of this document is advised that information contained hereon reflects the Company's findings at the time of its intervention only and within the limits of Client's instructions, if any. The Company's sole responsibility is to its Client and this document does not exonerate parties to a transaction from exercising all their rights and obligations under the transaction documents. This document cannot be reproduced except in full, without prior written approval of the Company. Any unauthorized alteration, forgery or falsification of the content or appearance of this document is unlawful and offenders may be prosecuted to the fullest extent of the law. Unless otherwise stated the results shown in this test report refer only to the sample(s) tested.  
**Attention: To check the authenticity of testing /inspection report & certificate, please contact us at telephone: (86-755) 8307 1443, or email: [CN.Doccheck@sgs.com](mailto:CN.Doccheck@sgs.com)**

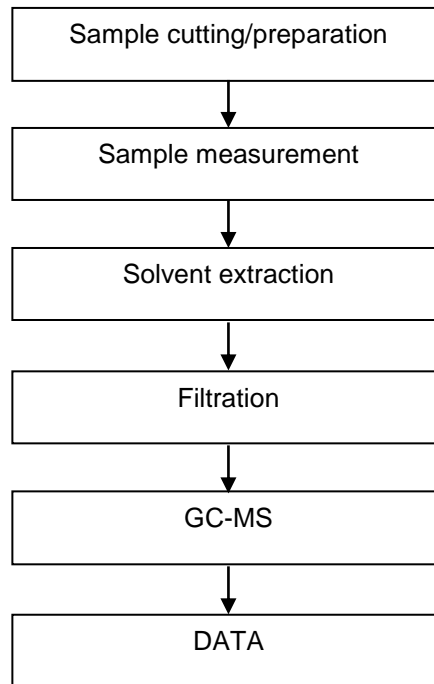
No.198, Kezhu Road, Science City, Economic & Technological Development Area, Guangzhou, Guangdong, China 510663  
中国·广东·广州高新技术产业开发区科学城科珠路198号 邮编: 510663

t (86-20) 82155555 [www.sgsgroup.com.cn](http://www.sgsgroup.com.cn)  
t (86-20) 82155555 [sgs.china@sgs.com](mailto:sgs.china@sgs.com)



## ATTACHMENTS

### Persistent, Bioaccumulative, and Toxic (PBT) Chemicals Testing Flow Chart



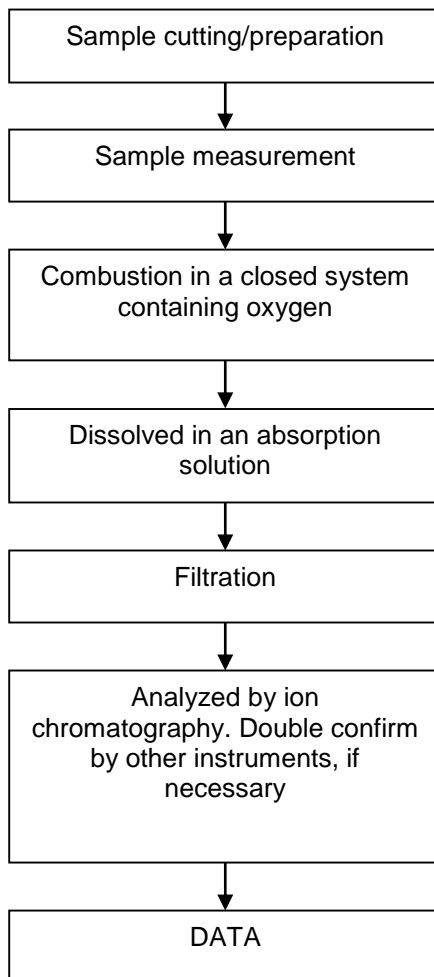
SGS-CSTC Standards Technical Services Co., Ltd.  
Guangzhou Branch / 广州分公司

Unless otherwise agreed in writing, this document is issued by the Company subject to its General Conditions of Service printed overleaf, available on request or accessible at <https://www.sgs.com/en/Terms-and-Conditions>. Attention is drawn to the limitation of liability, indemnification and jurisdiction issues defined therein. Any holder of this document is advised that information contained hereon reflects the Company's findings at the time of its intervention only and within the limits of Client's instructions, if any. The Company's sole responsibility is to its Client and this document does not exonerate parties to a transaction from exercising all their rights and obligations under the transaction documents. This document cannot be reproduced except in full, without prior written approval of the Company. Any unauthorized alteration, forgery or falsification of the content or appearance of this document is unlawful and offenders may be prosecuted to the fullest extent of the law. Unless otherwise stated the results shown in this test report refer only to the sample(s) tested.  
**Attention: To check the authenticity of testing / inspection report & certificate, please contact us at telephone: (86-755) 8307 1443, or email: [CN.Doccheck@sgs.com](mailto:CN.Doccheck@sgs.com)**

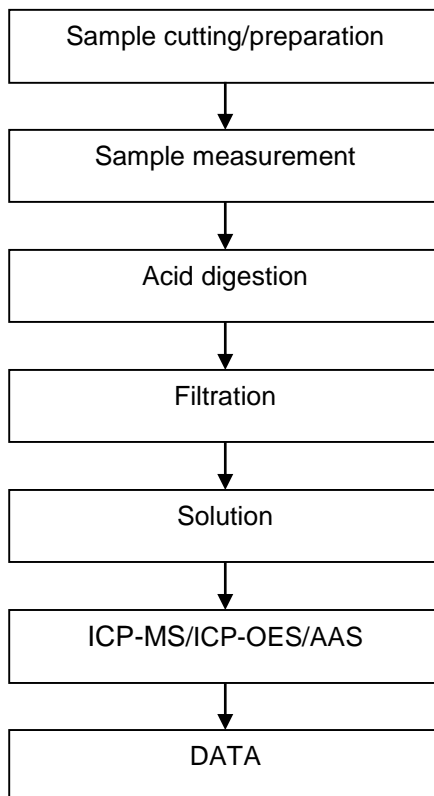
No.198, Kezhu Road, Science City, Economic & Technological Development Area, Guangzhou, Guangdong, China 510663  
中国·广东·广州高新技术产业开发区科学城科珠路198号 邮编: 510663

t (86-20) 82155555 www.sgsgroup.com.cn  
t (86-20) 82155555 sgs.china@sgs.com

## Halogen Testing Flow Chart

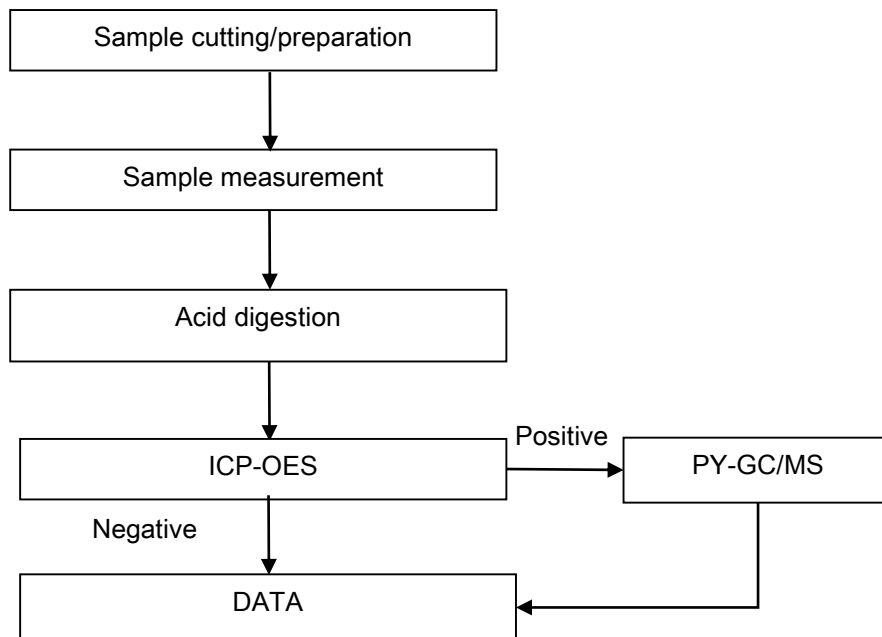


## Elements Testing Flow Chart



### ATTACHMENTS

#### Red phosphorus Testing Flow Chart



SGS-CTI Standards Technical Services Co., Ltd.  
Guangzhou Branch Technical Laboratory

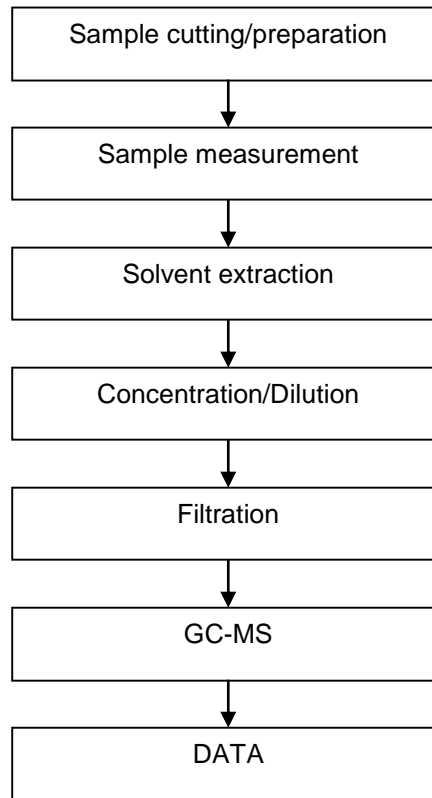
Unless otherwise agreed in writing, this document is issued by the Company subject to its General Conditions of Service printed overleaf, available on request or accessible at <https://www.sgs.com/en/Terms-and-Conditions>. Attention is drawn to the limitation of liability, indemnification and jurisdiction issues defined therein. Any holder of this document is advised that information contained hereon reflects the Company's findings at the time of its intervention only and within the limits of Client's instructions, if any. The Company's sole responsibility is to its Client and this document does not exonerate parties to a transaction from exercising all their rights and obligations under the transaction documents. This document cannot be reproduced except in full, without prior written approval of the Company. Any unauthorized alteration, forgery or falsification of the content or appearance of this document is unlawful and offenders may be prosecuted to the fullest extent of the law. Unless otherwise stated the results shown in this test report refer only to the sample(s) tested.  
Attention: To check the authenticity of testing /inspection report & certificate, please contact us at telephone: (86-755) 8307 1443, or email: [CN.Doccheck@sgs.com](mailto:CN.Doccheck@sgs.com)

No.198, Kezhu Road, Science City, Economic & Technological Development Area, Guangzhou, Guangdong, China 510663  
中国·广东·广州高新技术产业开发区科学城科珠路198号 邮编: 510663

t (86-20) 82155555 [www.sgsgroup.com.cn](http://www.sgsgroup.com.cn)  
t (86-20) 82155555 [sgs.china@sgs.com](mailto:sgs.china@sgs.com)



### HBCDD Testing Flow Chart



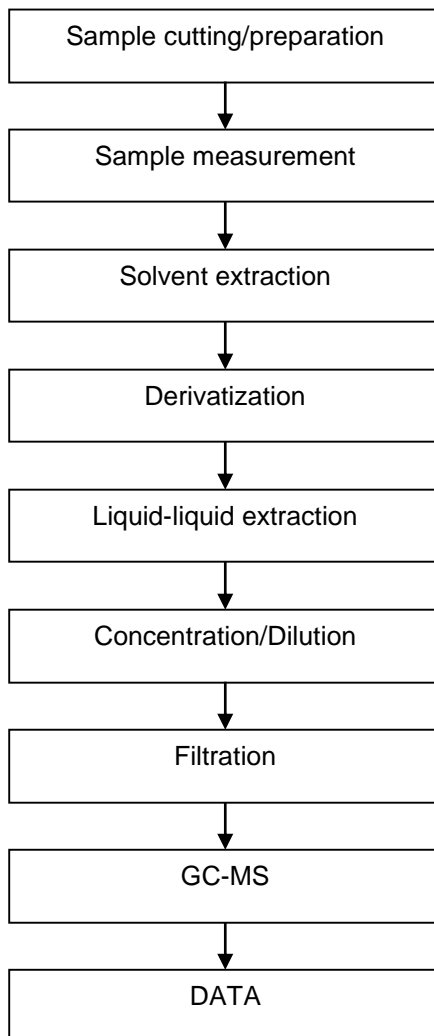
SGS-CT Standards Technical Service Co., Ltd.  
Guangzhou Branch Technical Laboratory

Unless otherwise agreed in writing, this document is issued by the Company subject to its General Conditions of Service printed overleaf, available on request or accessible at <https://www.sgs.com/en/Terms-and-Conditions>. Attention is drawn to the limitation of liability, indemnification and jurisdiction issues defined therein. Any holder of this document is advised that information contained hereon reflects the Company's findings at the time of its intervention only and within the limits of Client's instructions, if any. The Company's sole responsibility is to its Client and this document does not exonerate parties to a transaction from exercising all their rights and obligations under the transaction documents. This document cannot be reproduced except in full, without prior written approval of the Company. Any unauthorized alteration, forgery or falsification of the content or appearance of this document is unlawful and offenders may be prosecuted to the fullest extent of the law. Unless otherwise stated the results shown in this test report refer only to the sample(s) tested.  
Attention: To check the authenticity of testing /inspection report & certificate, please contact us at telephone: (86-755) 8307 1443, or email: [CN.Doccheck@sgs.com](mailto:CN.Doccheck@sgs.com)

No.198, Kezhu Road, Science City, Economic & Technological Development Area, Guangzhou, Guangdong, China 510663  
中国·广东·广州高新技术产业开发区科学城科珠路198号 邮编: 510663

t (86-20) 82155555 [www.sgsgroup.com.cn](http://www.sgsgroup.com.cn)  
t (86-20) 82155555 [sgs.china@sgs.com](mailto:sgs.china@sgs.com)

## Organotin Testing Flow Chart



## Test Report

No.: CANEC24015025803

Date: Jul 24, 2024

Page 23 of 23

Sample Photo:



SGS authenticate the photo on original report only  
\*\*\* End of Report \*\*\*



SGS-CSI Standards Technical Services Co., Ltd.  
Guangzhou Branch Technical Laboratory

Unless otherwise agreed in writing, this document is issued by the Company subject to its General Conditions of Service printed overleaf, available on request or accessible at <https://www.sgs.com/en/Terms-and-Conditions>. Attention is drawn to the limitation of liability, indemnification and jurisdiction issues defined therein. Any holder of this document is advised that information contained hereon reflects the Company's findings at the time of its intervention only and within the limits of Client's instructions, if any. The Company's sole responsibility is to its Client and this document does not exonerate parties to a transaction from exercising all their rights and obligations under the transaction documents. This document cannot be reproduced except in full, without prior written approval of the Company. Any unauthorized alteration, forgery or falsification of the content or appearance of this document is unlawful and offenders may be prosecuted to the fullest extent of the law. Unless otherwise stated the results shown in this test report refer only to the sample(s) tested.  
Attention: To check the authenticity of testing /inspection report & certificate, please contact us at telephone: (86-755) 8307 1443, or email: [CN.Doccheck@sgs.com](mailto:CN.Doccheck@sgs.com)

No.198, Kezhu Road, Science City, Economic & Technological Development Area, Guangzhou, Guangdong, China 510663  
中国·广东·广州高新技术产业开发区科学城科珠路198号 邮编: 510663

t (86-20) 82155555 [www.sgsgroup.com.cn](http://www.sgsgroup.com.cn)  
t (86-20) 82155555 [sgs.china@sgs.com](mailto:sgs.china@sgs.com)

Member of the SGS Group (SGS SA)