

## Test Report

No.: CANEC24015025809

Date: Jul 24, 2024

Page 1 of 27

Client Name: KINGBOARD LAMINATES HOLDINGS LIMITED

Client Address: 23/F., DELTA HOUSE, NO.3 ON YIU STREET, SHATIN, N.T. HONG KONG.

Sample Name: KB-6165F

Model No.: KB-6165F

Client Ref. Information: KB-6165LE

The above sample(s) and information were provided by the client.

SGS Job No.: GZP24-022805

Sample Receiving Date: Jul 10, 2024

Testing Period: Jul 10, 2024 ~ Jul 23, 2024

Test Requested: Select test(s) as requested by the client.

Test Method(s): Please refer to next page(s).

Test Result(s): Please refer to next page(s).

| Test Requirement                                                                                                                                                                                                                                                                                                          | Conclusion  |
|---------------------------------------------------------------------------------------------------------------------------------------------------------------------------------------------------------------------------------------------------------------------------------------------------------------------------|-------------|
| EU RoHS Directive (EU) 2015/863 amending Annex II to Directive 2011/65/EU - Lead, Mercury, Cadmium, Hexavalent chromium, Polybrominated biphenyls (PBB), Polybrominated diphenyl ethers (PBDE), Bis(2-ethylhexyl) phthalate (DEHP), Butyl benzyl phthalate (BBP), Dibutyl phthalate (DBP) and Diisobutyl phthalate (DIBP) | Pass        |
| Tetrabromobisphenol A (TBBP-A)                                                                                                                                                                                                                                                                                            | See Results |
| Alkanes C14-C17, chloro (medium- chain chlorinated paraffins) (MCCPs)                                                                                                                                                                                                                                                     | See Results |
| AfPS GS 2019:01 PAK-Polycyclic Aromatic Hydrocarbons (PAHs)                                                                                                                                                                                                                                                               | See Results |
| Persistent, Bioaccumulative, and Toxic (PBT) Chemicals under US EPA Toxic Substances Control Act (TSCA) Section 6(h)                                                                                                                                                                                                      | Pass        |
| Halogen                                                                                                                                                                                                                                                                                                                   | See Results |
| Element(s)                                                                                                                                                                                                                                                                                                                | See Results |
| Red Phosphorus                                                                                                                                                                                                                                                                                                            | See Results |

Signed for and on behalf of  
SGS-CSTC Standards Technical Services Co., Ltd. Guangzhou Branch

Allie Chen

Allie Chen

Approved Signatory

scan to see the report



E09D6B0E



SGS-CSTC Standards Technical Services Co., Ltd.  
Guangzhou Branch Standards Technical Services Co., Ltd. Laboratory

Unless otherwise agreed in writing, this document is issued by the Company subject to its General Conditions of Service printed overleaf, available on request or accessible at <https://www.sgs.com/en/Terms-and-Conditions>. Attention is drawn to the limitation of liability, indemnification and jurisdiction issues defined therein. Any holder of this document is advised that information contained hereon reflects the Company's findings at the time of its intervention only and within the limits of Client's instructions, if any. The Company's sole responsibility is to its Client and this document does not exonerate parties to a transaction from exercising all their rights and obligations under the transaction documents. This document cannot be reproduced except in full, without prior written approval of the Company. Any unauthorized alteration, forgery or falsification of the content or appearance of this document is unlawful and offenders may be prosecuted to the fullest extent of the law. Unless otherwise stated the results shown in this test report refer only to the sample(s) tested.  
Attention: To check the authenticity of testing /inspection report & certificate, please contact us at telephone: (86-755) 8307 1443, or email: [CN.Doccheck@sgs.com](mailto:CN.Doccheck@sgs.com)

No.198, Kezhu Road, Science City, Economic & Technological Development Area, Guangzhou, Guangdong, China 510663  
中国·广东·广州高新技术产业开发区科学城科珠路198号 邮编: 510663

t (86-20) 82155555 www.sgsgroup.com.cn  
t (86-20) 82155555 sgs.china@sgs.com

Member of the SGS Group (SGS SA)

# Test Report

No.: CANEC24015025809

Date: Jul 24, 2024

Page 2 of 27

| Test Requirement                 | Conclusion  |
|----------------------------------|-------------|
| Sulfur                           | See Results |
| Polychlorinated Biphenyls (PCBs) | See Results |
| Asbestos                         | See Results |
| Benzotriazole UV Absorbent       | See Results |
| Bisphenol-A                      | See Results |
| Chlorinated Paraffins            | See Results |
| Dimethyl fumarate (DMFu)         | See Results |
| Formaldehyde                     | See Results |
| Hexabromocyclododecane (HBCDD)   | See Results |
| Organic-Tin compounds            | See Results |
| Phthalates                       | See Results |
| Polyvinyl chloride (PVC)         | See Results |

## Test Result(s):

### Test Part Description:

| SN ID | Sample No. | SGS Sample ID           | Description                      |
|-------|------------|-------------------------|----------------------------------|
| SN1   | A2         | CAN24-0150258-0001.C002 | Double-side copper-clad laminate |

### Remarks:

- (1) 1 mg/kg = 1 ppm = 0.0001%
- (2) MDL = Method Detection Limit
- (3) ND = Not Detected (< MDL)
- (4) "-" = Not Regulated

**EU RoHS Directive (EU) 2015/863 amending Annex II to Directive 2011/65/EU - Lead, Mercury, Cadmium, Hexavalent chromium, Polybrominated biphenyls (PBB), Polybrominated diphenyl ethers (PBDE), Bis(2-ethylhexyl) phthalate (DEHP), Butyl benzyl phthalate (BBP), Dibutyl phthalate (DBP) and Diisobutyl phthalate (DIBP)**

**Test Method:** With reference to IEC 62321-4:2013+AMD1:2017, IEC 62321-5:2013, IEC 62321-7-2:2017, IEC 62321-6:2015 and IEC 62321-8:2017, analysis was performed by ICP-OES/AAS, UV-Vis and GC-MS.

| Test Item(s)                 | Limit | Unit(s) | MDL | A2 |
|------------------------------|-------|---------|-----|----|
| Lead (Pb)                    | 1000  | mg/kg   | 2   | 11 |
| Mercury (Hg)                 | 1000  | mg/kg   | 2   | ND |
| Cadmium (Cd)                 | 100   | mg/kg   | 2   | ND |
| Hexavalent Chromium (Cr(VI)) | 1000  | mg/kg   | 8   | ND |
| Polybromobiphenyl (PBB)      | 1000  | mg/kg   | -   | ND |



Unless otherwise agreed in writing, this document is issued by the Company subject to its General Conditions of Service printed overleaf, available on request or accessible at <https://www.sgs.com/en/Terms-and-Conditions>. Attention is drawn to the limitation of liability, indemnification and jurisdiction issues defined therein. Any holder of this document is advised that information contained hereon reflects the Company's findings at the time of its intervention only and within the limits of Client's instructions, if any. The Company's sole responsibility is to its Client and this document does not exonerate parties to a transaction from exercising all their rights and obligations under the transaction documents. This document cannot be reproduced except in full, without prior written approval of the Company. Any unauthorized alteration, forgery or falsification of the content or appearance of this document is unlawful and offenders may be prosecuted to the fullest extent of the law. Unless otherwise stated the results shown in this test report refer only to the sample(s) tested.

Attention: To check the authenticity of testing /inspection report & certificate, please contact us at telephone: (86-755) 8307 1443, or email: [CN.Doccheck@sgs.com](mailto:CN.Doccheck@sgs.com)

SGS-CSTC Standards Technical Services Co., Ltd.  
Guangzhou Branch / SGS-CSTC Technical Laboratory

No.198, Kezhu Road, Science City, Economic & Technological Development Area, Guangzhou, Guangdong, China 510663  
中国·广东·广州高新技术产业开发区科学城科珠路198号 邮编: 510663

t (86-20) 82155555 [www.sgsgroup.com.cn](http://www.sgsgroup.com.cn)  
t (86-20) 82155555 [sgs.china@sgs.com](mailto:sgs.china@sgs.com)

# Test Report

No.: CANEC24015025809

Date: Jul 24, 2024

Page 3 of 27

| Test Item(s)                              | Limit | Unit(s) | MDL | A2 |
|-------------------------------------------|-------|---------|-----|----|
| Monobrominated biphenyl (MonoBB)          | -     | mg/kg   | 5   | ND |
| Dibrominated biphenyl (DiBB)              | -     | mg/kg   | 5   | ND |
| Tribrominated biphenyl (TriBB)            | -     | mg/kg   | 5   | ND |
| Tetrabrominated biphenyl (TetraBB)        | -     | mg/kg   | 5   | ND |
| Pentabrominated biphenyl (PentaBB)        | -     | mg/kg   | 5   | ND |
| Hexabrominated biphenyl (HexaBB)          | -     | mg/kg   | 5   | ND |
| Heptabrominated biphenyl (HeptaBB)        | -     | mg/kg   | 5   | ND |
| Octabrominated biphenyl (OctaBB)          | -     | mg/kg   | 5   | ND |
| Nonabrominated biphenyl (NonaBB)          | -     | mg/kg   | 5   | ND |
| Decabrominated biphenyl (DecaBB)          | -     | mg/kg   | 5   | ND |
| Polybromodiphenyl ether(PBDE)             | 1000  | mg/kg   | -   | ND |
| Monobrominated diphenyl ether (MonoBDE)   | -     | mg/kg   | 5   | ND |
| Dibrominated diphenyl ether (DiBDE)       | -     | mg/kg   | 5   | ND |
| Tribrominated diphenyl ether (TriBDE)     | -     | mg/kg   | 5   | ND |
| Tetrabrominated diphenyl ether (TetraBDE) | -     | mg/kg   | 5   | ND |
| Pentabrominated diphenyl ether (PentaBDE) | -     | mg/kg   | 5   | ND |
| Hexabrominated diphenyl ether (HexaBDE)   | -     | mg/kg   | 5   | ND |
| Heptabrominated diphenyl ether (HeptaBDE) | -     | mg/kg   | 5   | ND |
| Octabrominated diphenyl ether (OctaBDE)   | -     | mg/kg   | 5   | ND |
| Nonabrominated diphenyl ether (NonaBDE)   | -     | mg/kg   | 5   | ND |
| Decabrominated diphenyl ether (DecaBDE)   | -     | mg/kg   | 5   | ND |
| Bis(2-ethylhexyl) phthalate (DEHP)        | 1000  | mg/kg   | 50  | ND |
| Butyl benzyl phthalate (BBP)              | 1000  | mg/kg   | 50  | ND |
| Dibutyl phthalate (DBP)                   | 1000  | mg/kg   | 50  | ND |
| Diisobutyl phthalate (DIBP)               | 1000  | mg/kg   | 50  | ND |

## Notes:

- (1) The maximum permissible limit is quoted from RoHS Directive (EU) 2015/863.
- (2) IEC 62321 series is equivalent to EN 62321 series.
- (3) The restriction of DEHP, BBP, DBP and DIBP shall apply to medical devices, including in vitro medical devices, and monitoring and control instruments, including industrial monitoring and control instruments, from 22 July 2021.

## Tetrabromobisphenol A (TBBP-A)

**Test Method:** With reference to US EPA 3550C: 2007, analysis was performed by GC-MS or LC-MS or LC-MS/MS.

| Test Item(s)                  | CAS No. | Unit(s) | MDL | A2 |
|-------------------------------|---------|---------|-----|----|
| Tetrabromobisphenol A(TBBP-A) | 79-94-7 | mg/kg   | 5   | ND |



SGS-CTI Standards Technical Services Co., Ltd.  
Guangzhou Branch

Unless otherwise agreed in writing, this document is issued by the Company subject to its General Conditions of Service printed overleaf, available on request or accessible at <https://www.sgs.com/en/Terms-and-Conditions>. Attention is drawn to the limitation of liability, indemnification and jurisdiction issues defined therein. Any holder of this document is advised that information contained hereon reflects the Company's findings at the time of its intervention only and within the limits of Client's instructions, if any. The Company's sole responsibility is to its Client and this document does not exonerate parties to a transaction from exercising all their rights and obligations under the transaction documents. This document cannot be reproduced except in full, without prior written approval of the Company. Any unauthorized alteration, forgery or falsification of the content or appearance of this document is unlawful and offenders may be prosecuted to the fullest extent of the law. Unless otherwise stated the results shown in this test report refer only to the sample(s) tested.  
**Attention: To check the authenticity of testing / inspection report & certificate, please contact us at telephone: (86-755) 8307 1443, or email: CN.Doccheck@sgs.com**

No.198, Kezhu Road, Science City, Economic & Technological Development Area, Guangzhou, Guangdong, China 510663  
中国·广东·广州高新技术产业开发区科学城科珠路198号 邮编: 510663

t (86-20) 82155555 www.sgsgroup.com.cn  
t (86-20) 82155555 sgs.china@sgs.com

# Test Report

No.: CANEC24015025809

Date: Jul 24, 2024

Page 4 of 27

## Alkanes C14-C17, chloro (medium- chain chlorinated paraffins) (MCCPs)

**Test Method:** With reference to ISO 22818:2021, analysis was performed by GC-NCI-MS.

| Test Item(s)                                                                                    | CAS No.               | Unit(s) | MDL | A2 |
|-------------------------------------------------------------------------------------------------|-----------------------|---------|-----|----|
| Alkanes C <sub>14</sub> -C <sub>17</sub> , chloro (medium- chain chlorinated paraffins) (MCCPs) | 85535-85-9 and others | mg/kg   | 50  | ND |

## AfPS GS 2019:01 PAK-Polycyclic Aromatic Hydrocarbons (PAHs)

**Test Method:** With reference to AfPS GS 2019:01 PAK, analysis was performed by GC-MS.

| Test Item(s)                                                              | CAS No.  | Unit(s) | MDL | A2 |
|---------------------------------------------------------------------------|----------|---------|-----|----|
| Benzo(a)pyrene(BaP)                                                       | 50-32-8  | mg/kg   | 0.1 | ND |
| Benzo(e)pyrene(BeP)                                                       | 192-97-2 | mg/kg   | 0.1 | ND |
| Benzo(a)anthracene(BaA)                                                   | 56-55-3  | mg/kg   | 0.1 | ND |
| Benzo(b)Fluoranthene(BbF)                                                 | 205-99-2 | mg/kg   | 0.1 | ND |
| Benzo(j)fluoranthene(BjF)                                                 | 205-82-3 | mg/kg   | 0.1 | ND |
| Benzo(k)Fluoranthene(BkF)                                                 | 207-08-9 | mg/kg   | 0.1 | ND |
| Chrysene(CHR)                                                             | 218-01-9 | mg/kg   | 0.1 | ND |
| Dibenzo(a,h)Anthracene(DBA)                                               | 53-70-3  | mg/kg   | 0.1 | ND |
| Benzo(g,h,i)perylene(BPE)                                                 | 191-24-2 | mg/kg   | 0.1 | ND |
| Indeno(1,2,3-c,d)pyrene(IPY)                                              | 193-39-5 | mg/kg   | 0.1 | ND |
| Phenanthrene(PHE)                                                         | 85-01-8  | mg/kg   | 0.1 | ND |
| Pyrene(PYR)                                                               | 129-00-0 | mg/kg   | 0.1 | ND |
| Anthracene(ANT)                                                           | 120-12-7 | mg/kg   | 0.1 | ND |
| Fluoranthene(FLT)                                                         | 206-44-0 | mg/kg   | 0.1 | ND |
| Sum of Phenanthrene(PHE), Pyrene(PYR), Anthracene(ANT), Fluoranthene(FLT) | -        | mg/kg   | -   | ND |
| Naphthalene(NAP)                                                          | 91-20-3  | mg/kg   | 0.1 | ND |
| Sum of 15 PAHs                                                            | -        | mg/kg   | -   | ND |
| Material Category                                                         | -        | -       | -   | -  |

### Notes:

#### AfPS (German commission for Product Safety) : PAHs requirements

| Parameter | Category 1                                                                                         | Category 2                                                                                                                                                                                       | Category 3                                                                                                                                              |
|-----------|----------------------------------------------------------------------------------------------------|--------------------------------------------------------------------------------------------------------------------------------------------------------------------------------------------------|---------------------------------------------------------------------------------------------------------------------------------------------------------|
|           | Materials intended to be placed in the mouth, or materials coming into long-term contact with skin | Materials not covered by category 1, coming into long-term contact (more than 30s) or short-term repetitive contact <sup>c</sup> with skin during the intended or foreseeable use <sup>d</sup> . | Materials covered neither by category 1 nor by category 2, coming into short-term contact (up to 30s) with skin during the intended or foreseeable use. |



SGS-CTI Standards Technical Services Co., Ltd.  
Guangzhou Branch Technical Laboratory

Unless otherwise agreed in writing, this document is issued by the Company subject to its General Conditions of Service printed overleaf, available on request or accessible at <https://www.sgs.com/en/Terms-and-Conditions>. Attention is drawn to the limitation of liability, indemnification and jurisdiction issues defined therein. Any holder of this document is advised that information contained hereon reflects the Company's findings at the time of its intervention only and within the limits of Client's instructions, if any. The Company's sole responsibility is to its Client and this document does not exonerate parties to a transaction from exercising all their rights and obligations under the transaction documents. This document cannot be reproduced except in full, without prior written approval of the Company. Any unauthorized alteration, forgery or falsification of the content or appearance of this document is unlawful and offenders may be prosecuted to the fullest extent of the law. Unless otherwise stated the results shown in this test report refer only to the sample(s) tested.  
**Attention: To check the authenticity of testing /inspection report & certificate, please contact us at telephone: (86-755) 8307 1443, or email: CN.Doccheck@sgs.com**

No.198, Kezhu Road, Science City, Economic & Technological Development Area, Guangzhou, Guangdong, China 510663  
中国·广东·广州高新技术产业开发区科学城科珠路198号 邮编: 510663

t (86-20) 82155555 www.sgs.com.cn  
t (86-20) 82155555 sgs.china@sgs.com



## Test Report

No.: CANEC24015025809

Date: Jul 24, 2024

Page 5 of 27

|                                                                                           | (more than 30s)<br>during the<br>intended use<br>-in toys<br>according to<br>Directive<br>2009/48/EC<br>or<br>-for the use by<br>children <sup>a,b</sup> up<br>to 3 years of<br>age. | a.<br>use by<br>children | b.<br>other<br>consumer<br>products | a.<br>use by<br>children | b.<br>other<br>consumer<br>products |
|-------------------------------------------------------------------------------------------|--------------------------------------------------------------------------------------------------------------------------------------------------------------------------------------|--------------------------|-------------------------------------|--------------------------|-------------------------------------|
| Benzo(a)pyrene (BaP)<br>mg/kg                                                             | < 0.2                                                                                                                                                                                | < 0.2                    | < 0.5                               | < 0.5                    | < 1                                 |
| Benzo(e)pyrene (BeP)<br>mg/kg                                                             | < 0.2                                                                                                                                                                                | < 0.2                    | < 0.5                               | < 0.5                    | < 1                                 |
| Benzo(a)anthracene<br>(BaA) mg/kg                                                         | < 0.2                                                                                                                                                                                | < 0.2                    | < 0.5                               | < 0.5                    | < 1                                 |
| Benzo(b)fluoranthene<br>(BbF) mg/kg                                                       | < 0.2                                                                                                                                                                                | < 0.2                    | < 0.5                               | < 0.5                    | < 1                                 |
| Benzo(j)fluoranthene<br>(BjF) mg/kg                                                       | < 0.2                                                                                                                                                                                | < 0.2                    | < 0.5                               | < 0.5                    | < 1                                 |
| Benzo(k)fluoranthene<br>(BkF)mg/kg                                                        | < 0.2                                                                                                                                                                                | < 0.2                    | < 0.5                               | < 0.5                    | < 1                                 |
| Chrysene (CHR) mg/kg                                                                      | < 0.2                                                                                                                                                                                | < 0.2                    | < 0.5                               | < 0.5                    | < 1                                 |
| Dibenzo(a,h)anthracene<br>(DBA) mg/kg                                                     | < 0.2                                                                                                                                                                                | < 0.2                    | < 0.5                               | < 0.5                    | < 1                                 |
| Benzo(g,h,i)perylene<br>(BPE) mg/kg                                                       | < 0.2                                                                                                                                                                                | < 0.2                    | < 0.5                               | < 0.5                    | < 1                                 |
| Indeno(1,2,3-cd)pyrene<br>(IPY) mg/kg                                                     | < 0.2                                                                                                                                                                                | < 0.2                    | < 0.5                               | < 0.5                    | < 1                                 |
| Phenanthrene (PHE),<br>pyrene (PYR),<br>anthracene (ANT),<br>fluoranthene (FLT),<br>mg/kg | < 1 Sum                                                                                                                                                                              | < 5 Sum                  | < 10 Sum                            | < 20 Sum                 | < 50 Sum                            |
| Naphthalene (NAP)<br>mg/kg                                                                | < 1                                                                                                                                                                                  | < 2                      |                                     | < 10                     |                                     |
| <b>Sum of 15 PAHs</b>                                                                     | <1                                                                                                                                                                                   | < 5                      | < 10                                | < 20                     | < 50                                |

### Notes:

<sup>a</sup> A "Child" is legally defined as a person before reaching the age of 14 years.

<sup>b</sup> Use by children includes both active and passive contact by children.

<sup>c</sup> Definition "short-term repetitive contact" taken from REACH Annex XVII entry 50 amendment (Regulation



SGS-CSTC Standards Technical Services Co., Ltd.  
Guangzhou Branch / 广州分公司

Unless otherwise agreed in writing, this document is issued by the Company subject to its General Conditions of Service printed overleaf, available on request or accessible at <https://www.sgs.com/en/Terms-and-Conditions>. Attention is drawn to the limitation of liability, indemnification and jurisdiction issues defined therein. Any holder of this document is advised that information contained hereon reflects the Company's findings at the time of its intervention only and within the limits of Client's instructions, if any. The Company's sole responsibility is to its Client and this document does not exonerate parties to a transaction from exercising all their rights and obligations under the transaction documents. This document cannot be reproduced except in full, without prior written approval of the Company. Any unauthorized alteration, forgery or falsification of the content or appearance of this document is unlawful and offenders may be prosecuted to the fullest extent of the law. Unless otherwise stated the results shown in this test report refer only to the sample(s) tested.  
**Attention: To check the authenticity of testing / inspection report & certificate, please contact us at telephone: (86-755) 8307 1443, or email: CN.Doccheck@sgs.com**

No.198, Kezhu Road, Science City, Economic & Technological Development Area, Guangzhou, Guangdong, China 510663  
中国·广东·广州高新技术产业开发区科学城科珠路198号 邮编: 510663

t (86-20) 82155555 www.sgsgroup.com.cn  
t (86-20) 82155555 sgs.china@sgs.com

## Test Report

No.: CANEC24015025809

Date: Jul 24, 2024

Page 6 of 27

(EC) No.1272/2013)

<sup>d</sup> According to the definition of the German Product Safety Act (ProdSG) (chapter 1 Article 2 No. 28) "foreseeable use" shall mean the use of a product in a manner that the person placing it on the market, has not intended, but which could be reasonably foreseeable.

Remark:

The German committee on Product Safety (AfPS) published a new PAHs document (AfPS GS 2019:01 PAK) on April 10, 2020, which will be binding for the issue of GS mark certificate from July 1, 2020.

### **Persistent, Bioaccumulative, and Toxic (PBT) Chemicals under US EPA Toxic Substances Control Act (TSCA) Section 6(h)**

**Test Method:** SGS In-house method (SGS-CCL-TOP-149-07, With reference to US EPA Method 3550C:2007), analysis was performed by GC-MS.

| Test Item(s)                                                  | CAS No.    | Limit      | Unit(s) | MDL | A2          |
|---------------------------------------------------------------|------------|------------|---------|-----|-------------|
| Decabromodiphenyl ether (DecaBDE) <sup>Δ1</sup>               | 1163-19-5  | Prohibited | mg/kg   | 5   | ND          |
| Phenol, isopropylated phosphate (3:1) (PIP 3:1) <sup>Δ2</sup> | 68937-41-7 | Prohibited | mg/kg   | 5   | ND          |
| 2,4,6-Tris(tert-butyl)phenol (2,4,6-TTBP) <sup>Δ3</sup>       | 732-26-3   | 3000       | mg/kg   | 5   | ND          |
| Hexachlorobutadiene (HCBd)                                    | 87-68-3    | Prohibited | mg/kg   | 5   | ND          |
| Pentachlorothiophenol (PCTP)                                  | 133-49-3   | 10000      | mg/kg   | 5   | ND          |
| <b>Conclusion</b>                                             |            |            |         |     | <b>Pass</b> |

#### Notes:

(1) The regulation is available at the following link.

<https://www.epa.gov/assessing-and-managing-chemicals-under-tsca/persistent-bioaccumulative-and-toxic-pbt-chemicals-under>

(2) <sup>Δ1</sup>: The submitted sample is exempted if it is plastic for recycling from products or articles containing Deca-BDE.

(3) <sup>Δ2</sup>: The submitted sample is exempted from the regulated scope if it is anyone of the following:

- Hydraulic fluids for aviation or military industry;
- Lubricants and grease;
- New and replacement parts for motor and aerospace vehicles;
- Intermediate in a closed system to produce cyanoacrylate adhesive;
- Specialized engine air filters for locomotive and marine applications;
- Plastic for recycling from products or articles containing PIP (3:1);
- Finished products or articles made of plastic recycled from products or articles containing PIP (3:1).

(4) <sup>Δ3</sup>: The submitted sample is out of the regulated scope if it is not oil or lubricant.

#### **Halogen**

**Test Method:** With reference to EN 14582:2016, analysis was performed by IC.

| Test Item(s) | Unit(s) | MDL | A2  |
|--------------|---------|-----|-----|
| Fluorine(F)  | mg/kg   | 20  | 815 |
| Chlorine(Cl) | mg/kg   | 50  | 536 |



SGS-CTI Standards Technical Services Co., Ltd.  
Guangzhou Branch Technical Laboratory

Unless otherwise agreed in writing, this document is issued by the Company subject to its General Conditions of Service printed overleaf, available on request or accessible at <https://www.sgs.com/en/Terms-and-Conditions>. Attention is drawn to the limitation of liability, indemnification and jurisdiction issues defined therein. Any holder of this document is advised that information contained hereon reflects the Company's findings at the time of its intervention only and within the limits of Client's instructions, if any. The Company's sole responsibility is to its Client and this document does not exonerate parties to a transaction from exercising all their rights and obligations under the transaction documents. This document cannot be reproduced except in full, without prior written approval of the Company. Any unauthorized alteration, forgery or falsification of the content or appearance of this document is unlawful and offenders may be prosecuted to the fullest extent of the law. Unless otherwise stated the results shown in this test report refer only to the sample(s) tested.  
**Attention: To check the authenticity of testing / inspection report & certificate, please contact us at telephone: (86-755) 8307 1443, or email: CN.Doccheck@sgs.com**

No.198, Kezhu Road, Science City, Economic & Technological Development Area, Guangzhou, Guangdong, China 510663  
中国·广东·广州高新技术产业开发区科学城科珠路198号 邮编: 510663

t (86-20) 82155555 www.sgs.com.cn  
t (86-20) 82155555 sgs.china@sgs.com

## Test Report

No.: CANEC24015025809

Date: Jul 24, 2024

Page 7 of 27

| Test Item(s) | Unit(s) | MDL | A2    |
|--------------|---------|-----|-------|
| Bromine(Br)  | mg/kg   | 50  | 63744 |
| Iodine(I)    | mg/kg   | 50  | ND    |

### Element(s)

**Test Method:** With reference to US EPA 3052:1996, analysis was performed by ICP-OES/AAS.

| Test Item(s)  | Unit(s) | MDL | A2 |
|---------------|---------|-----|----|
| Arsenic(As)   | mg/kg   | 10  | ND |
| Beryllium(Be) | mg/kg   | 5   | ND |
| Nickel (Ni)   | mg/kg   | 5   | ND |
| Antimony(Sb)  | mg/kg   | 10  | ND |

### Red Phosphorus

**Test Method:** SGS In-house method (SGS-CCL-TOP-215-01), analysis was performed by PY-GC/MS/ICP-OES / GC-MS.

| Test Item(s)   | CAS No.   | Unit(s) | MDL | A2 |
|----------------|-----------|---------|-----|----|
| Red Phosphorus | 7723-14-0 | mg/kg   | 500 | ND |

### Sulfur

**Test Method:** With reference to EN 14582:2016, analysis was performed by IC.

| Test Item(s) | Unit(s) | MDL | A2 |
|--------------|---------|-----|----|
| Sulfur (S)   | mg/kg   | 50  | ND |

### Polychlorinated Biphenyls (PCBs)

**Test Method:** SGS In-house method (GZTC CHEM-TOP-032-01, with reference to EPA 8082A:2007), analysis was performed by GC-ECD/GC-MS.

| Test Item(s)                                 | CAS No.    | Unit(s) | MDL | A2 |
|----------------------------------------------|------------|---------|-----|----|
| 2,4,4'-Trichlorobiphenyl(PCB28)              | 7012-37-5  | mg/kg   | 0.5 | ND |
| 2,2',5,5'-Tetrachlorobiphenyl(PCB52)         | 35693-99-3 | mg/kg   | 0.5 | ND |
| 2,2',4,5,5'-Pentachlorobiphenyl(PCB101)      | 37680-73-2 | mg/kg   | 0.5 | ND |
| 2,3',4,4',5-Pentachlorobiphenyl(PCB118)      | 31508-00-6 | mg/kg   | 0.5 | ND |
| 2,2',3,4,4',5'-Hexachlorobiphenyl(PCB138)    | 35065-28-2 | mg/kg   | 0.5 | ND |
| 2,2',4,4',5,5'-Hexachlorobiphenyl(PCB153)    | 35065-27-1 | mg/kg   | 0.5 | ND |
| 2,2',3,4,4',5,5'-Heptachlorobiphenyl(PCB180) | 35065-29-3 | mg/kg   | 0.5 | ND |

### Asbestos

**Test Method:** With reference to NIOSH 9000:2015 / NIOSH 9002:1994, analysis was performed by XRD / PLM.



SGS-CST Standards Technical Service Co., Ltd.  
Guangzhou Branch Technical Laboratory

Unless otherwise agreed in writing, this document is issued by the Company subject to its General Conditions of Service printed overleaf, available on request or accessible at <https://www.sgs.com/en/Terms-and-Conditions>. Attention is drawn to the limitation of liability, indemnification and jurisdiction issues defined therein. Any holder of this document is advised that information contained hereon reflects the Company's findings at the time of its intervention only and within the limits of Client's instructions, if any. The Company's sole responsibility is to its Client and this document does not exonerate parties to a transaction from exercising all their rights and obligations under the transaction documents. This document cannot be reproduced except in full, without prior written approval of the Company. Any unauthorized alteration, forgery or falsification of the content or appearance of this document is unlawful and offenders may be prosecuted to the fullest extent of the law. Unless otherwise stated the results shown in this test report refer only to the sample(s) tested.  
**Attention: To check the authenticity of testing / inspection report & certificate, please contact us at telephone: (86-755) 8307 1443, or email: CN.Doccheck@sgs.com**

No.198, Kezhu Road, Science City, Economic & Technological Development Area, Guangzhou, Guangdong, China 510663  
中国·广东·广州高新技术产业开发区科学城科珠路198号 邮编: 510663

t (86-20) 82155555 www.sgsgroup.com.cn  
t (86-20) 82155555 sgs.china@sgs.com

# Test Report

No.: CANEC24015025809

Date: Jul 24, 2024

Page 8 of 27

| Test Item(s)  | CAS No.                    | Unit(s) | MDL | A2       |
|---------------|----------------------------|---------|-----|----------|
| Chrysotile    | 12001-29-5<br>/132207-32-0 | %(m/m)  | 0.1 | Negative |
| Amosite       | 12172-73-5                 | %(m/m)  | 0.1 | Negative |
| Crocidolite   | 12001-28-4                 | %(m/m)  | 0.1 | Negative |
| Anthophyllite | 77536-67-5                 | %(m/m)  | 0.1 | Negative |
| Tremolite     | 77536-68-6                 | %(m/m)  | 0.1 | Negative |
| Actinolite    | 77536-66-4                 | %(m/m)  | 0.1 | Negative |

## Notes:

(1) Negative = the absence of asbestos, Positive = the presence of asbestos.

## Benzotriazole UV Absorbent

**Test Method:** SGS In-house method(GZTC CHEM-TOP-102, with reference to EPA 3550C:2007), analysis was performed by GC-MS.

| Test Item(s)                                                        | CAS No.    | Unit(s) | MDL | A2 |
|---------------------------------------------------------------------|------------|---------|-----|----|
| 2-Benzotriazol-2-yl-4,6-di-tert-butylphenol(UV 320)                 | 3846-71-7  | mg/kg   | 5   | ND |
| 2-(2H-Benzotriazol-2-yl)-4(tert-butyl)-6-(sec-butyl)phenol (UV 350) | 36437-37-3 | mg/kg   | 5   | ND |
| 2-(2H-Benzotriazol-2-yl)-4,6-di-tert-pentylphenol(UV 328)           | 25973-55-1 | mg/kg   | 5   | ND |
| 2,4-Di-tert-butyl-6-(5-chlorobenzotriazol-2-yl)phenol (UV 327)      | 3864-99-1  | mg/kg   | 5   | ND |

## Bisphenol-A

**Test Method:** SGS In-house method (GZTC CHEM-TOP-075-02, With reference to EPA 3550C:2007 & EPA 8321B:2007), analysis was performed by HPLC-DAD/MS / LC-MS/MS.

| Test Item(s) | CAS No. | Unit(s) | MDL | A2 |
|--------------|---------|---------|-----|----|
| Bisphenol-A  | 80-05-7 | mg/kg   | 1.0 | ND |

## Chlorinated Paraffins

**Test Method:** With reference to ISO 22818:2021,analysis was performed by GC-NCI-MS.

| Test Item(s)                                                              | CAS No.    | Unit(s) | MDL | A2 |
|---------------------------------------------------------------------------|------------|---------|-----|----|
| Short Chain Chlorinate Paraffins(SCCP)(C <sub>10</sub> -C <sub>13</sub> ) | 85535-84-8 | mg/kg   | 50  | ND |

## Dimethyl fumarate (DMFu)

**Test Method:** Solvent extraction, analysis was performed by GC-MS.

| Test Item(s)             | CAS No.  | Unit(s) | MDL | A2 |
|--------------------------|----------|---------|-----|----|
| Dimethyl Fumarate (DMFu) | 624-49-7 | mg/kg   | 0.1 | ND |



SGS-CSTC Standards Technical Services Co., Ltd.  
Guangzhou Branch / 广州分公司

Unless otherwise agreed in writing, this document is issued by the Company subject to its General Conditions of Service printed overleaf, available on request or accessible at <https://www.sgs.com/en/Terms-and-Conditions>. Attention is drawn to the limitation of liability, indemnification and jurisdiction issues defined therein. Any holder of this document is advised that information contained hereon reflects the Company's findings at the time of its intervention only and within the limits of Client's instructions, if any. The Company's sole responsibility is to its Client and this document does not exonerate parties to a transaction from exercising all their rights and obligations under the transaction documents. This document cannot be reproduced except in full, without prior written approval of the Company. Any unauthorized alteration, forgery or falsification of the content or appearance of this document is unlawful and offenders may be prosecuted to the fullest extent of the law. Unless otherwise stated the results shown in this test report refer only to the sample(s) tested.  
Attention: To check the authenticity of testing / inspection report & certificate, please contact us at telephone: (86-755) 8307 1443, or email: [CN.Doccheck@sgs.com](mailto:CN.Doccheck@sgs.com)

No.198, Kezhu Road, Science City, Economic & Technological Development Area, Guangzhou, Guangdong, China 510663  
中国·广东·广州高新技术产业开发区科学城科珠路198号 邮编: 510663

t (86-20) 82155555 [www.sgsgroup.com.cn](http://www.sgsgroup.com.cn)  
t (86-20) 82155555 [sgs.china@sgs.com](mailto:sgs.china@sgs.com)



## Test Report

No.: CANEC24015025809

Date: Jul 24, 2024

Page 9 of 27

**Formaldehyde****Test Method:** With reference to ISO 14184-1:2011, analysis was performed by UV-Vis.

| Test Item(s) | Unit(s) | MDL | A2 |
|--------------|---------|-----|----|
| Formaldehyde | mg/kg   | 16  | ND |

**Hexabromocyclododecane (HBCDD)****Test Method:** With reference to IEC 62321-9:2021, analysis was performed by GC-MS.

| Test Item(s)                                                                                                                 | CAS No.                                                                  | Unit(s) | MDL | A2 |
|------------------------------------------------------------------------------------------------------------------------------|--------------------------------------------------------------------------|---------|-----|----|
| Hexabromocyclododecane (HBCDD) and all major diastereoisomers identified ( $\alpha$ -HBCDD, $\beta$ -HBCDD, $\gamma$ -HBCDD) | 134237-50-6<br>/134237-51-7<br>/134237-52-8<br>/25637-99-4<br>/3194-55-6 | mg/kg   | 20  | ND |

**Organic-Tin compounds****Test Method:** With reference to ISO 17353:2004, analysis was performed by GC-MS.

| Test Item(s)            | Unit(s) | MDL  | A2 |
|-------------------------|---------|------|----|
| Dibutyl tin(DBT)        | mg/kg   | 0.02 | ND |
| Tributyl tin(TBT)       | mg/kg   | 0.02 | ND |
| Diocetyl tin(DOT)       | mg/kg   | 0.02 | ND |
| Triphenyl tin(TPhT)     | mg/kg   | 0.02 | ND |
| Tricyclohexyltin(TCyHT) | mg/kg   | 0.02 | ND |
| Trimethyltin(TMT)       | mg/kg   | 0.02 | ND |
| Triocetyl tin(TOT)      | mg/kg   | 0.02 | ND |
| Tri-n-propyltin(TPT)    | mg/kg   | 0.02 | ND |

**Phthalates****Test Method:** With reference to IEC 62321-8:2017, analysis was performed by GC-MS.

| Test Item(s)                       | CAS No.                   | Unit(s) | MDL | A2 |
|------------------------------------|---------------------------|---------|-----|----|
| Dibutyl Phthalate(DBP)             | 84-74-2                   | mg/kg   | 50  | ND |
| Bis-(2-ethylhexyl) Phthalate(DEHP) | 117-81-7                  | mg/kg   | 50  | ND |
| Benzyl Butyl Phthalate(BBP)        | 85-68-7                   | mg/kg   | 50  | ND |
| Diisononyl Phthalate (DINP)        | 28553-12-0<br>/68515-48-0 | mg/kg   | 50  | ND |
| Di-n-Octyl Phthalate(DNOP)         | 117-84-0                  | mg/kg   | 50  | ND |
| Diisodecyl Phthalate (DIDP)        | 26761-40-0<br>/68515-49-1 | mg/kg   | 50  | ND |
| Diisobutyl Phthalate(DIBP)         | 84-69-5                   | mg/kg   | 50  | ND |
| Bis(2-methoxyethyl)phthalate(DMEP) | 117-82-8                  | mg/kg   | 50  | ND |
| Di-n-Hexyl Phthalate(DnHP)         | 84-75-3                   | mg/kg   | 50  | ND |
| Dipentyl Phthalate (DPENP/DnPP)    | 131-18-0                  | mg/kg   | 50  | ND |



Unless otherwise agreed in writing, this document is issued by the Company subject to its General Conditions of Service printed overleaf, available on request or accessible at <https://www.sgs.com/en/Terms-and-Conditions>. Attention is drawn to the limitation of liability, indemnification and jurisdiction issues defined therein. Any holder of this document is advised that information contained hereon reflects the Company's findings at the time of its intervention only and within the limits of Client's instructions, if any. The Company's sole responsibility is to its Client and this document does not exonerate parties to a transaction from exercising all their rights and obligations under the transaction documents. This document cannot be reproduced except in full, without prior written approval of the Company. Any unauthorized alteration, forgery or falsification of the content or appearance of this document is unlawful and offenders may be prosecuted to the fullest extent of the law. Unless otherwise stated the results shown in this test report refer only to the sample(s) tested.

Attention: To check the authenticity of testing /inspection report & certificate, please contact us at telephone: (86-755) 8307 1443, or email: [CN.Doccheck@sgs.com](mailto:CN.Doccheck@sgs.com)

SGS-CSTC Standards Technical Services Co., Ltd.  
Guangzhou Branch: Standards Technical Laboratory

No.198, Kezhu Road, Science City, Economic & Technological Development Area, Guangzhou, Guangdong, China 510663  
中国·广东·广州高新技术产业开发区科学城科珠路198号 邮编: 510663

t (86-20) 82155555 [www.sgsgroup.com.cn](http://www.sgsgroup.com.cn)  
t (86-20) 82155555 [sgs.china@sgs.com](mailto:sgs.china@sgs.com)

## Test Report

No.: CANEC24015025809

Date: Jul 24, 2024

Page 10 of 27

| Test Item(s)                                                                  | CAS No.     | Unit(s) | MDL | A2 |
|-------------------------------------------------------------------------------|-------------|---------|-----|----|
| Diphenyl Phthalate(DPhP)                                                      | 84-62-8     | mg/kg   | 50  | ND |
| Diundecyl Phthalate(DUDP)                                                     | 3648-20-2   | mg/kg   | 50  | ND |
| Dimethyl Phthalate(DMP)                                                       | 131-11-3    | mg/kg   | 50  | ND |
| Diethyl Phthalate(DEP)                                                        | 84-66-2     | mg/kg   | 50  | ND |
| Dipropyl Phthalate(DPrP)                                                      | 131-16-8    | mg/kg   | 50  | ND |
| Dicyclohexyl Phthalate(DCHP)                                                  | 84-61-7     | mg/kg   | 50  | ND |
| Dibenzyl Phthalate(DBzP)                                                      | 523-31-9    | mg/kg   | 50  | ND |
| Dinonyl Phthalate(DNP)                                                        | 84-76-4     | mg/kg   | 50  | ND |
| Diisooctyl Phthalate(DIOP)                                                    | 27554-26-3  | mg/kg   | 50  | ND |
| Diallyl Phthalate(DAP)                                                        | 131-17-9    | mg/kg   | 50  | ND |
| n-Decyl-n-Octyl Phthalate(nDnOP)                                              | 119-07-3    | mg/kg   | 50  | ND |
| Di-n-Decyl Phthalate(DnDP)                                                    | 84-77-5     | mg/kg   | 50  | ND |
| Diisopentyl Phthalate(DIPP)                                                   | 605-50-5    | mg/kg   | 50  | ND |
| n-pentyl Isopentyl Phthalate(nPIPP)                                           | 776297-69-9 | mg/kg   | 50  | ND |
| Bis(2-n-butoxyethyl)Phthalate(DBEP)                                           | 117-83-9    | mg/kg   | 50  | ND |
| Bis(4-methyl-2-pentyl)Phthalate(BMPP)                                         | 146-50-9    | mg/kg   | 50  | ND |
| Bis(2-ethoxyethyl)Phthalate(DEEP)                                             | 605-54-9    | mg/kg   | 50  | ND |
| 1,2-Benzenedicarboxylic Acid,di-C6-8-branched alkyl esters,C7-rich(DIHP)      | 71888-89-6  | mg/kg   | 50  | ND |
| Di-n-Heptyl Phthalate(DnHpP)                                                  | 3648-21-3   | mg/kg   | 50  | ND |
| 1,2-Benzenedicarboxylic Acid,Di-C7-11-Branched and Linear Alkyl Esters(DHNUP) | 68515-42-4  | mg/kg   | 50  | ND |
| 1,2-Benzenedicarboxylic Acid,Dipentyl Ester,Branched and Linear(DPP)          | 84777-06-0  | mg/kg   | 50  | ND |
| Ditridecyl Phthalate(DTDP)                                                    | 119-06-2    | mg/kg   | 50  | ND |
| 1,2-benzenedicarboxylic Acid,dihexyl ester branched and linear(DHxP)          | 68515-50-4  | mg/kg   | 50  | ND |
| Di-(2-Ethylhexyl)Adipate(DEHA)                                                | 103-23-1    | mg/kg   | 50  | ND |
| Dioctyl Terephthalate(DOTP)                                                   | 6422-86-2   | mg/kg   | 50  | ND |
| Diisononyl Adipate(DINA)                                                      | 33703-08-1  | mg/kg   | 50  | ND |
| Di(2-propylheptyl)Phthalate(DPHpP)                                            | 53306-54-0  | mg/kg   | 50  | ND |
| Acetyl Tributyl Citrate(ATBC)                                                 | 77-90-7     | mg/kg   | 50  | ND |
| Trioctyl trimellitate(TOTM)                                                   | 3319-31-1   | mg/kg   | 50  | ND |

### Polyvinyl chloride (PVC)

**Test Method:** SGS In-house method (SGS-CCL-TOP-066-01), analysis was performed by FTIR/HATR.

| Test Item(s)             | A2       |
|--------------------------|----------|
| Polyvinyl chloride (PVC) | Negative |

### Notes:

(1) Negative=Undetectable, Positive=Detectable

Unless otherwise stated, the decision rule for conformity reporting is based on Binary Statement for Simple Acceptance Rule (w=0) stated in ILAC-G8:09/2019.



SGS-CST Standards Technical Service Co., Ltd.  
Guangzhou Branch

Unless otherwise agreed in writing, this document is issued by the Company subject to its General Conditions of Service printed overleaf, available on request or accessible at <https://www.sgs.com/en/Terms-and-Conditions>. Attention is drawn to the limitation of liability, indemnification and jurisdiction issues defined therein. Any holder of this document is advised that information contained hereon reflects the Company's findings at the time of its intervention only and within the limits of Client's instructions, if any. The Company's sole responsibility is to its Client and this document does not exonerate parties to a transaction from exercising all their rights and obligations under the transaction documents. This document cannot be reproduced except in full, without prior written approval of the Company. Any unauthorized alteration, forgery or falsification of the content or appearance of this document is unlawful and offenders may be prosecuted to the fullest extent of the law. Unless otherwise stated the results shown in this test report refer only to the sample(s) tested.  
**Attention: To check the authenticity of testing / inspection report & certificate, please contact us at telephone: (86-755) 8307 1443, or email: CN.Doccheck@sgs.com**

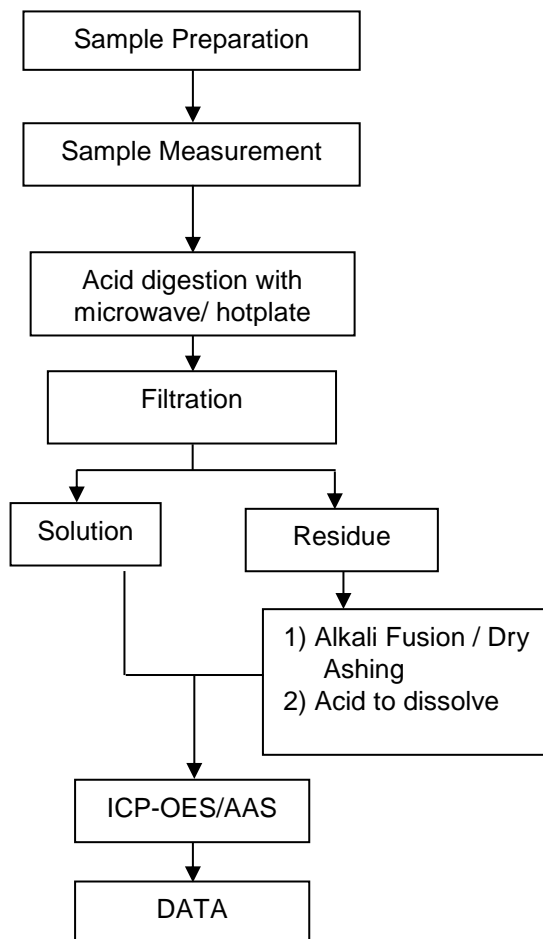
No.198, Kezhu Road, Science City, Economic & Technological Development Area, Guangzhou, Guangdong, China 510663  
中国·广东·广州高新技术产业开发区科学城科珠路198号 邮编: 510663

t (86-20) 82155555 www.sgsgroup.com.cn  
t (86-20) 82155555 sgs.china@sgs.com

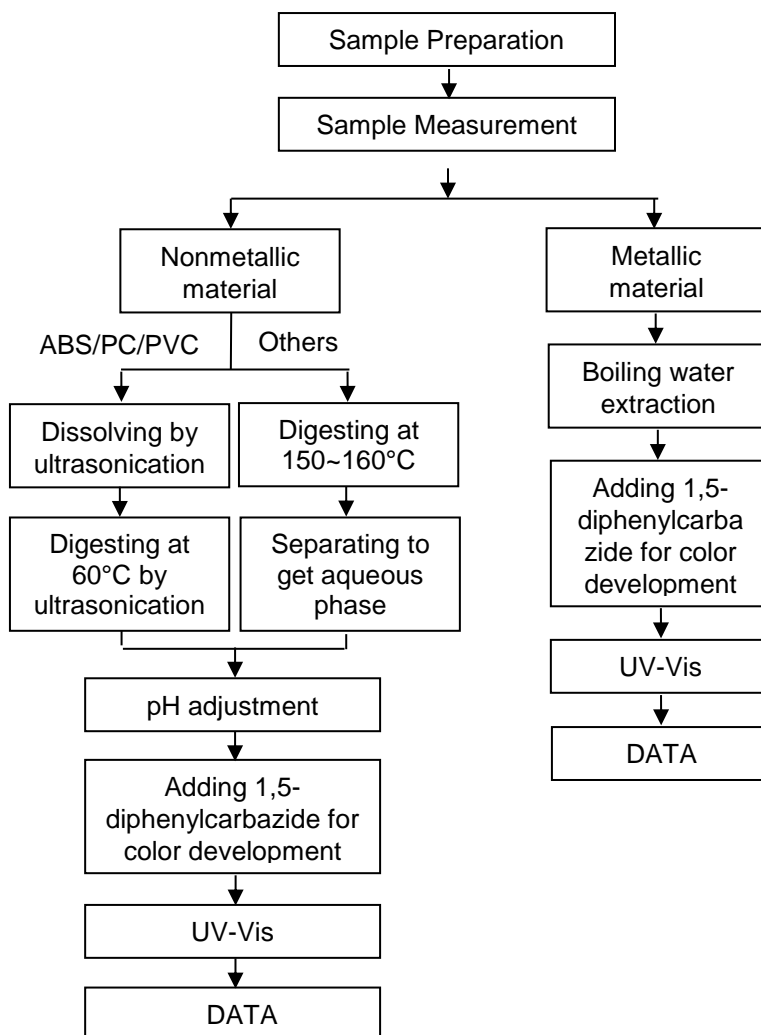
Member of the SGS Group (SGS SA)

### Elements Testing Flow Chart

These samples were dissolved totally by pre-conditioning method according to below flow chart.

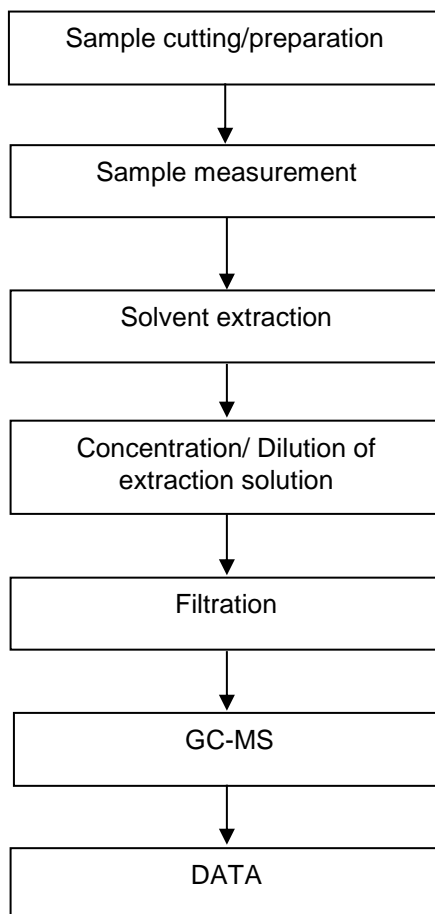


### Hexavalent Chromium (Cr(VI)) Testing Flow Chart





## PBB/PBDE Testing Flow Chart



## Phthalates Testing Flow Chart



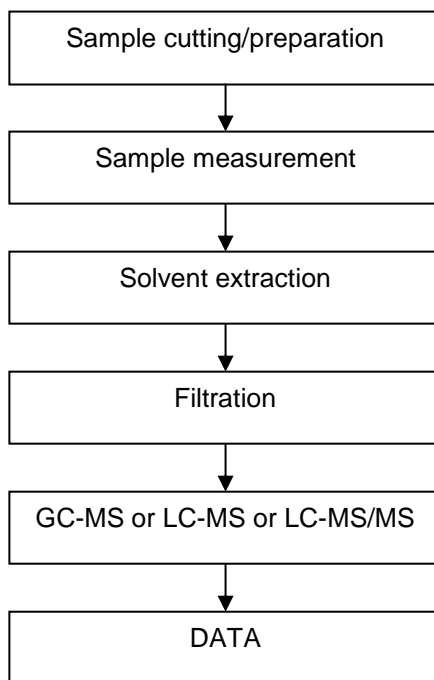
SGS-CSI Standards Technical Service Co., Ltd.  
Guangzhou Branch Technical Laboratory

Unless otherwise agreed in writing, this document is issued by the Company subject to its General Conditions of Service printed overleaf, available on request or accessible at <https://www.sgs.com/en/Terms-and-Conditions>. Attention is drawn to the limitation of liability, indemnification and jurisdiction issues defined therein. Any holder of this document is advised that information contained hereon reflects the Company's findings at the time of its intervention only and within the limits of Client's instructions, if any. The Company's sole responsibility is to its Client and this document does not exonerate parties to a transaction from exercising all their rights and obligations under the transaction documents. This document cannot be reproduced except in full, without prior written approval of the Company. Any unauthorized alteration, forgery or falsification of the content or appearance of this document is unlawful and offenders may be prosecuted to the fullest extent of the law. Unless otherwise stated the results shown in this test report refer only to the sample(s) tested.  
**Attention: To check the authenticity of testing /inspection report & certificate, please contact us at telephone: (86-755) 8307 1443, or email: [CN.Doccheck@sgs.com](mailto:CN.Doccheck@sgs.com)**

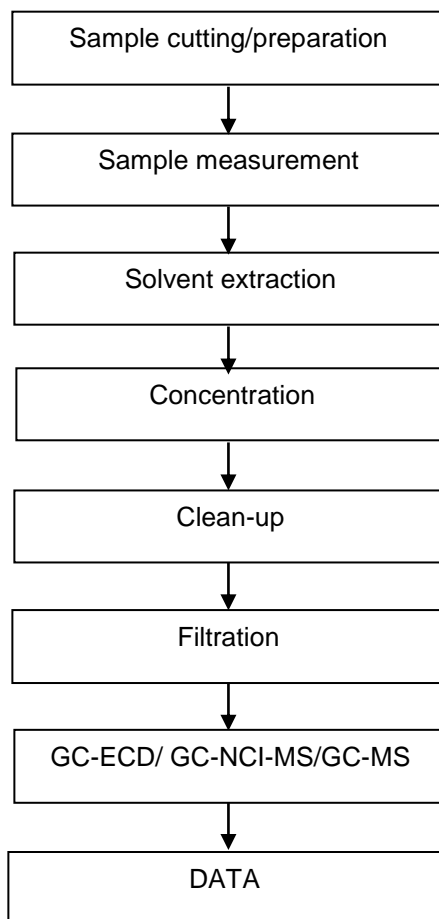
No.198, Kezhu Road, Science City, Economic & Technological Development Area, Guangzhou, Guangdong, China 510663  
中国·广东·广州高新技术产业开发区科学城科珠路198号 邮编: 510663

t (86-20) 82155555 [www.sgsgroup.com.cn](http://www.sgsgroup.com.cn)  
t (86-20) 82155555 [sgs.china@sgs.com](mailto:sgs.china@sgs.com)

#### TBBP-A Testing Flow Chart

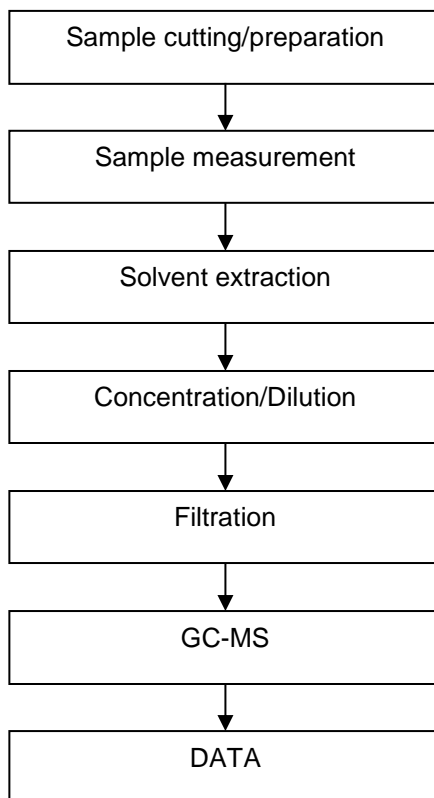


## Chlorinated Paraffin Testing Flow Chart



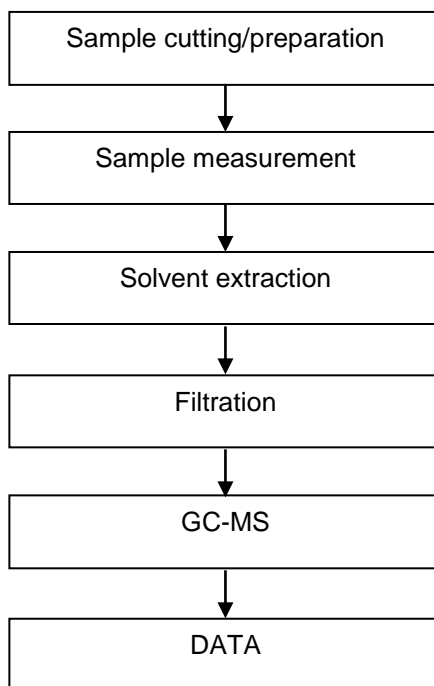


## PAHs Testing Flow Chart



### ATTACHMENTS

### Persistent, Bioaccumulative, and Toxic (PBT) Chemicals Testing Flow Chart



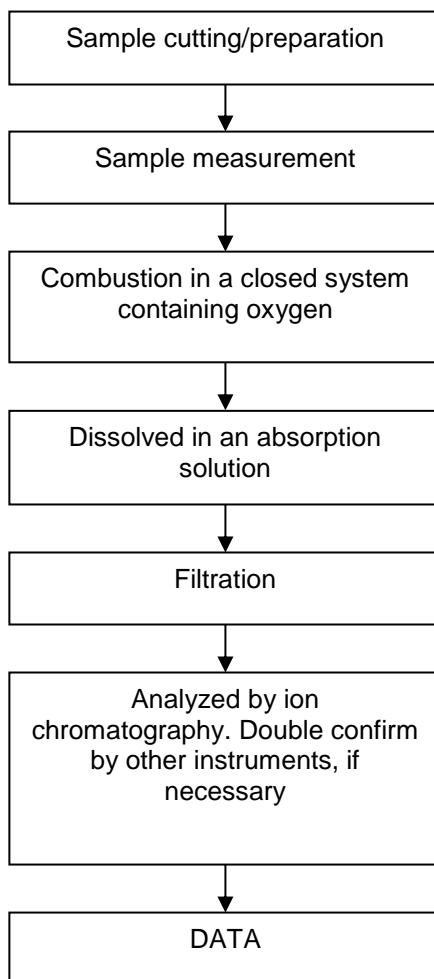
SGS-CSI Standards Technical Services Co., Ltd.  
Guangzhou Branch/Science City Chemical Laboratory

Unless otherwise agreed in writing, this document is issued by the Company subject to its General Conditions of Service printed overleaf, available on request or accessible at <https://www.sgs.com/en/Terms-and-Conditions>. Attention is drawn to the limitation of liability, indemnification and jurisdiction issues defined therein. Any holder of this document is advised that information contained hereon reflects the Company's findings at the time of its intervention only and within the limits of Client's instructions, if any. The Company's sole responsibility is to its Client and this document does not exonerate parties to a transaction from exercising all their rights and obligations under the transaction documents. This document cannot be reproduced except in full, without prior written approval of the Company. Any unauthorized alteration, forgery or falsification of the content or appearance of this document is unlawful and offenders may be prosecuted to the fullest extent of the law. Unless otherwise stated the results shown in this test report refer only to the sample(s) tested.  
**Attention: To check the authenticity of testing /inspection report & certificate, please contact us at telephone: (86-755) 8307 1443, or email: [CN.Doccheck@sgs.com](mailto:CN.Doccheck@sgs.com)**

No.198, Kezhu Road, Science City, Economic & Technological Development Area, Guangzhou, Guangdong, China 510663  
中国·广东·广州高新技术产业开发区科学城科珠路198号 邮编: 510663

t (86-20) 82155555 [www.sgsgroup.com.cn](http://www.sgsgroup.com.cn)  
t (86-20) 82155555 [sgs.china@sgs.com](mailto:sgs.china@sgs.com)

## Halogen Testing Flow Chart



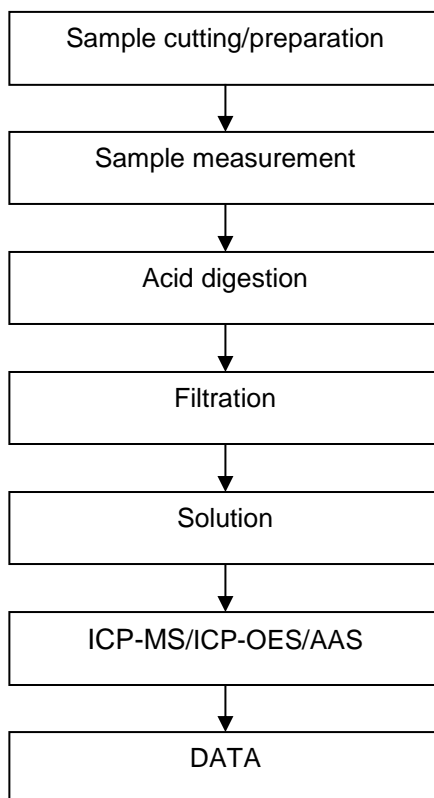
SGS-CSTC Standards Technical Services Co., Ltd.  
Guangzhou Branch Technical Laboratory

Unless otherwise agreed in writing, this document is issued by the Company subject to its General Conditions of Service printed overleaf, available on request or accessible at <https://www.sgs.com/en/Terms-and-Conditions>. Attention is drawn to the limitation of liability, indemnification and jurisdiction issues defined therein. Any holder of this document is advised that information contained hereon reflects the Company's findings at the time of its intervention only and within the limits of Client's instructions, if any. The Company's sole responsibility is to its Client and this document does not exonerate parties to a transaction from exercising all their rights and obligations under the transaction documents. This document cannot be reproduced except in full, without prior written approval of the Company. Any unauthorized alteration, forgery or falsification of the content or appearance of this document is unlawful and offenders may be prosecuted to the fullest extent of the law. Unless otherwise stated the results shown in this test report refer only to the sample(s) tested.  
**Attention: To check the authenticity of testing /inspection report & certificate, please contact us at telephone: (86-755) 8307 1443, or email: [CN.Doccheck@sgs.com](mailto:CN.Doccheck@sgs.com)**

No.198, Kezhu Road, Science City, Economic & Technological Development Area, Guangzhou, Guangdong, China 510663  
中国·广东·广州高新技术产业开发区科学城科珠路198号 邮编: 510663

t (86-20) 82155555 [www.sgsgroup.com.cn](http://www.sgsgroup.com.cn)  
t (86-20) 82155555 [sgs.china@sgs.com](mailto:sgs.china@sgs.com)

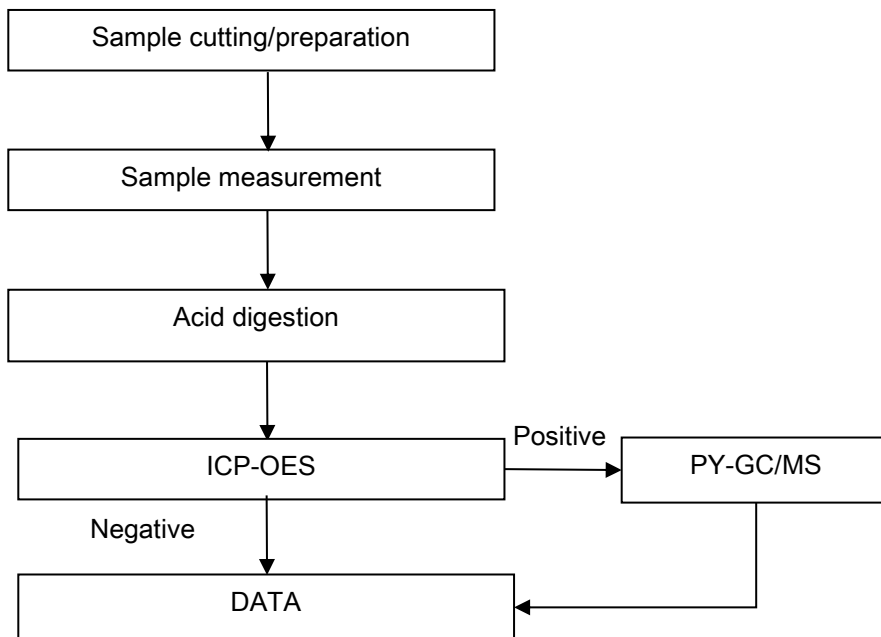
## Elements Testing Flow Chart



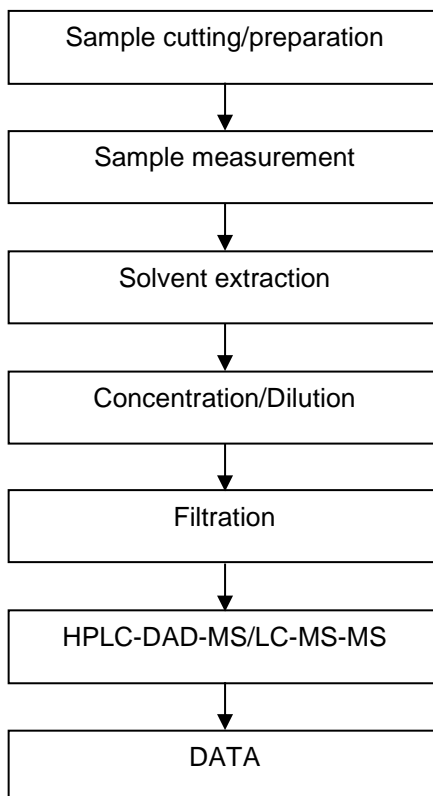


### ATTACHMENTS

#### Red phosphorus Testing Flow Chart



## BPA Testing Flow Chart



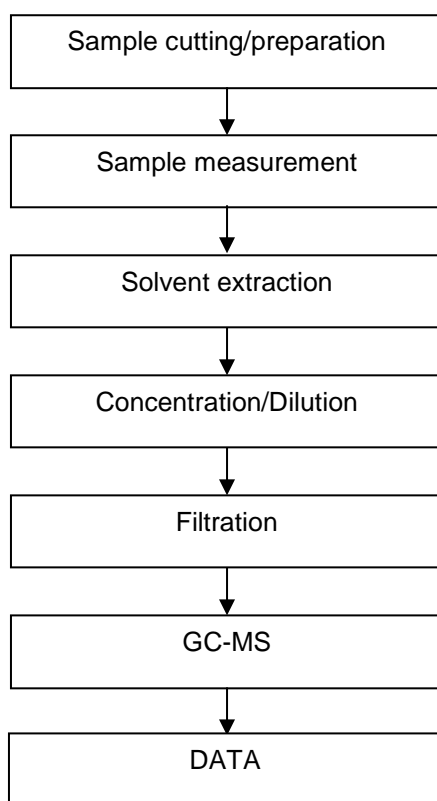
SGS-CT Standards Technical Service Co., Ltd.  
Guangzhou Branch Technical Laboratory

Unless otherwise agreed in writing, this document is issued by the Company subject to its General Conditions of Service printed overleaf, available on request or accessible at <https://www.sgs.com/en/Terms-and-Conditions>. Attention is drawn to the limitation of liability, indemnification and jurisdiction issues defined therein. Any holder of this document is advised that information contained hereon reflects the Company's findings at the time of its intervention only and within the limits of Client's instructions, if any. The Company's sole responsibility is to its Client and this document does not exonerate parties to a transaction from exercising all their rights and obligations under the transaction documents. This document cannot be reproduced except in full, without prior written approval of the Company. Any unauthorized alteration, forgery or falsification of the content or appearance of this document is unlawful and offenders may be prosecuted to the fullest extent of the law. Unless otherwise stated the results shown in this test report refer only to the sample(s) tested.  
**Attention: To check the authenticity of testing /inspection report & certificate, please contact us at telephone: (86-755) 8307 1443, or email: [CN.Doccheck@sgs.com](mailto:CN.Doccheck@sgs.com)**

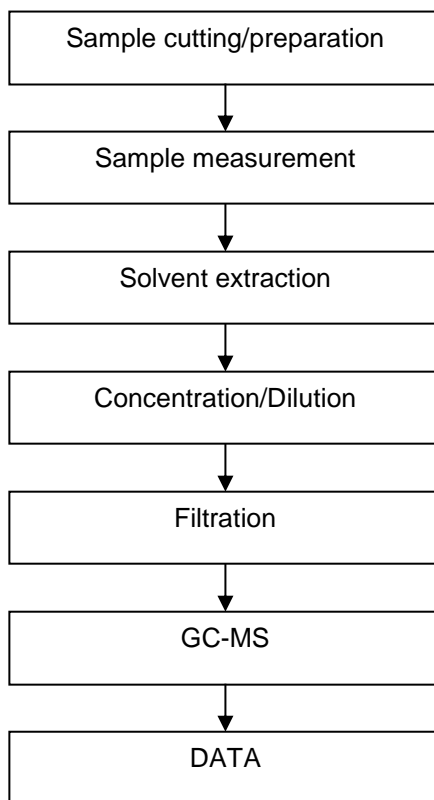
No.198, Kezhu Road, Science City, Economic & Technological Development Area, Guangzhou, Guangdong, China 510663  
中国·广东·广州高新技术产业开发区科学城科珠路198号 邮编: 510663

t (86-20) 82155555 [www.sgsgroup.com.cn](http://www.sgsgroup.com.cn)  
t (86-20) 82155555 [sgs.china@sgs.com](mailto:sgs.china@sgs.com)

## DMF (Dimethyl fumarate) Testing Flow Chart



## HBCDD Testing Flow Chart



SGS-CSTC Standards Technical Services Co., Ltd.  
Guangzhou Branch/Technical Laboratory

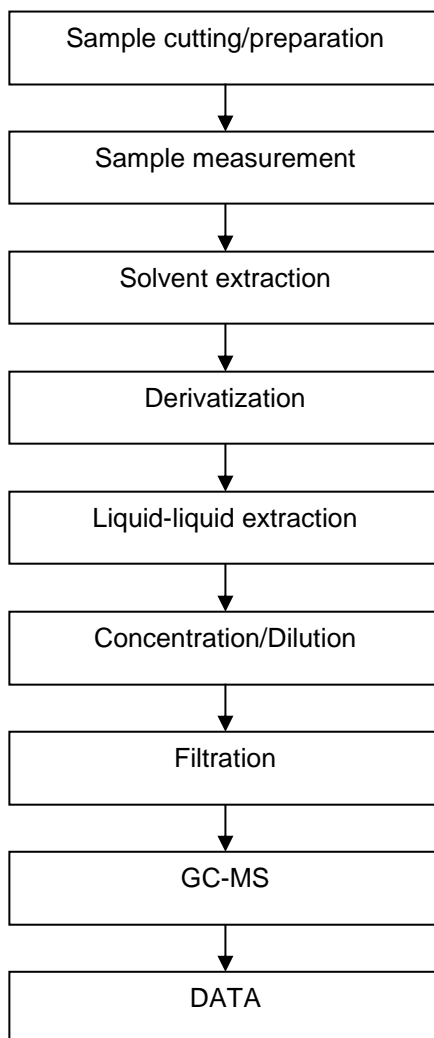
Unless otherwise agreed in writing, this document is issued by the Company subject to its General Conditions of Service printed overleaf, available on request or accessible at <https://www.sgs.com/en/Terms-and-Conditions>. Attention is drawn to the limitation of liability, indemnification and jurisdiction issues defined therein. Any holder of this document is advised that information contained hereon reflects the Company's findings at the time of its intervention only and within the limits of Client's instructions, if any. The Company's sole responsibility is to its Client and this document does not exonerate parties to a transaction from exercising all their rights and obligations under the transaction documents. This document cannot be reproduced except in full, without prior written approval of the Company. Any unauthorized alteration, forgery or falsification of the content or appearance of this document is unlawful and offenders may be prosecuted to the fullest extent of the law. Unless otherwise stated the results shown in this test report refer only to the sample(s) tested.  
**Attention: To check the authenticity of testing /inspection report & certificate, please contact us at telephone: (86-755) 8307 1443, or email: [CN.Doccheck@sgs.com](mailto:CN.Doccheck@sgs.com)**

No.198, Kezhu Road, Science City, Economic & Technological Development Area, Guangzhou, Guangdong, China 510663  
中国·广东·广州高新技术产业开发区科学城科珠路198号 邮编: 510663

t (86-20) 82155555 [www.sgsgroup.com.cn](http://www.sgsgroup.com.cn)  
t (86-20) 82155555 [sgs.china@sgs.com](mailto:sgs.china@sgs.com)



#### Organotin Testing Flow Chart



## Test Report

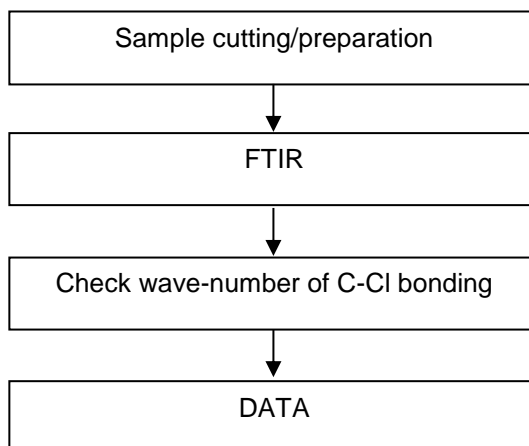
### ATTACHMENTS

No.: CANEC24015025809

Date: Jul 24, 2024

Page 26 of 27

### PVC Testing Flow Chart



SGS-CSI Standards Technical Services Co., Ltd.  
Guangzhou Branch/Technical Laboratory

Unless otherwise agreed in writing, this document is issued by the Company subject to its General Conditions of Service printed overleaf, available on request or accessible at <https://www.sgs.com/en/Terms-and-Conditions>. Attention is drawn to the limitation of liability, indemnification and jurisdiction issues defined therein. Any holder of this document is advised that information contained hereon reflects the Company's findings at the time of its intervention only and within the limits of Client's instructions, if any. The Company's sole responsibility is to its Client and this document does not exonerate parties to a transaction from exercising all their rights and obligations under the transaction documents. This document cannot be reproduced except in full, without prior written approval of the Company. Any unauthorized alteration, forgery or falsification of the content or appearance of this document is unlawful and offenders may be prosecuted to the fullest extent of the law. Unless otherwise stated the results shown in this test report refer only to the sample(s) tested.  
Attention: To check the authenticity of testing /inspection report & certificate, please contact us at telephone: (86-755) 8307 1443, or email: [CN.Doccheck@sgs.com](mailto:CN.Doccheck@sgs.com)

No.198, Kezhu Road, Science City, Economic & Technological Development Area, Guangzhou, Guangdong, China 510663  
中国·广东·广州高新技术产业开发区科学城科珠路198号 邮编: 510663

t (86-20) 82155555 [www.sgsgroup.com.cn](http://www.sgsgroup.com.cn)  
t (86-20) 82155555 [sgs.china@sgs.com](mailto:sgs.china@sgs.com)

Member of the SGS Group (SGS SA)

## Test Report

No.: CANEC24015025809

Date: Jul 24, 2024

Page 27 of 27

Sample Photo:



SGS authenticate the photo on original report only  
\*\*\* End of Report \*\*\*



SGS-CSL Standards Technical Service Co., Ltd.  
Guangzhou Branch Technical Laboratory

Unless otherwise agreed in writing, this document is issued by the Company subject to its General Conditions of Service printed overleaf, available on request or accessible at <https://www.sgs.com/en/Terms-and-Conditions>. Attention is drawn to the limitation of liability, indemnification and jurisdiction issues defined therein. Any holder of this document is advised that information contained hereon reflects the Company's findings at the time of its intervention only and within the limits of Client's instructions, if any. The Company's sole responsibility is to its Client and this document does not exonerate parties to a transaction from exercising all their rights and obligations under the transaction documents. This document cannot be reproduced except in full, without prior written approval of the Company. Any unauthorized alteration, forgery or falsification of the content or appearance of this document is unlawful and offenders may be prosecuted to the fullest extent of the law. Unless otherwise stated the results shown in this test report refer only to the sample(s) tested.  
Attention: To check the authenticity of testing / inspection report & certificate, please contact us at telephone: (86-755) 8307 1443, or email: [CN.Doccheck@sgs.com](mailto:CN.Doccheck@sgs.com)

No.198, Kezhu Road, Science City, Economic & Technological Development Area, Guangzhou, Guangdong, China 510663  
中国·广东·广州高新技术产业开发区科学城科珠路198号 邮编: 510663

t (86-20) 82155555 [www.sgsgroup.com.cn](http://www.sgsgroup.com.cn)  
t (86-20) 82155555 [sgs.china@sgs.com](mailto:sgs.china@sgs.com)

Member of the SGS Group (SGS SA)