

## 测试报告

No. GZ1005049280/CHEM

日期: 2010 年 5 月 17 日

第1页, 共14页

建滔积层板控股有限公司  
香港新界沙田香港科学园第二期科技大道东十二号海滨大楼一座二楼

以下测试之样品是由申请者所提供及确认: KB-6164

SGS 工作编号 : GZ12494508EC  
测试样品信息 : KB-6164  
客户参考信息 : KB-6064, KB-6168/ 6068, KB-6165/6065, KB-6167/6067,  
KB-6164F/6064F, KB-6165F/6065F, KB-6167F/6067F  
样品接收日期 : 2010 年 5 月 10 日  
测试周期 : 2010 年 5 月 10 日 - 2010 年 5 月 13 日

测试要求 : 根据客户要求测试

测试方法 : 请参见下一页

测试结果 : 请参见下一页

通标标准技术服务有限公司  
授权签名



Manson Yang 杨跃飞  
批准签署人

This document is issued by the Company under its General Conditions of Service printed overleaf or available on request and accessible at [http://www.sgs.com/terms\\_and\\_conditions.htm](http://www.sgs.com/terms_and_conditions.htm). Attention is drawn to the limitation of liability, indemnification and jurisdiction issues defined therein. Any holder of this document is advised that information contained hereon reflects the Company's findings at the time of its intervention only and within the limits of Client's instructions, if any. The Company's sole responsibility is to its Client and this document does not generate parties to a transaction from exercising all their rights and obligations under the transaction documents. Any unauthorized alteration, forgery or falsification of the content or appearance of this document is unlawful and offenders may be prosecuted to the fullest extent of the law.  
Unless otherwise stated, the results shown in this test report refer only to the sample(s) tested. This document cannot be reproduced except in full, without prior approval of the Company.



SGS (Shanghai) Standards Technical Services Co., Ltd.  
Guangzhou General Chemical Laboratory

198 Kazhu Road, Sointech Park, Guangzhou Economic & Technology Development District, Guangzhou, China 510663 | (86-20) 82155555 | (86-20) 82075125 | www.cn.sgs.com  
中国·广州·经济技术开发区科学城科珠路198号 邮编: 510663 | (86-20) 82155555 | (86-20) 82075125 | e: sgs.china@sgs.com

## 测试报告

No. GZ1005049280/CHEM

日期: 2010 年 5 月 17 日

第2页, 共14页

测试结果:

样本 1 描述: 黄绿色片状物

### 元素分析

测试项目	单位	测试方法 (参考)	测试结果	MDL
镉 (Cd)	mg/kg	IEC 62321:2008, ICP-OES	N.D.	2
铅 (Pb)	mg/kg	IEC 62321:2008, ICP-OES	N.D.	2
汞 (Hg)	mg/kg	IEC 62321:2008, ICP-OES	N.D.	2
碱性溶液萃取测六价铬 (CrVI)	mg/kg	IEC 62321:2008, UV-Vis	N.D.	2

注释:

1. mg/kg = ppm
2. N.D. = 未检出 (< MDL)
3. MDL = 方法检测限

### 阻燃剂

测试项目	单位	测试方法 (参考)	测试结果	MDL
多溴联苯(PBBs)之和	mg/kg	-	N.D.	-
单溴联苯	mg/kg	IEC 62321:2008, GC-MS	N.D.	5
二溴联苯	mg/kg	IEC 62321:2008, GC-MS	N.D.	5
三溴联苯	mg/kg	IEC 62321:2008, GC-MS	N.D.	5
四溴联苯	mg/kg	IEC 62321:2008, GC-MS	N.D.	5
五溴联苯	mg/kg	IEC 62321:2008, GC-MS	N.D.	5
六溴联苯	mg/kg	IEC 62321:2008, GC-MS	N.D.	5
七溴联苯	mg/kg	IEC 62321:2008, GC-MS	N.D.	5
八溴联苯	mg/kg	IEC 62321:2008, GC-MS	N.D.	5
九溴联苯	mg/kg	IEC 62321:2008, GC-MS	N.D.	5
十溴联苯	mg/kg	IEC 62321:2008, GC-MS	N.D.	5
多溴二苯醚(PBDEs)之和	mg/kg	-	N.D.	-
单溴二苯醚	mg/kg	IEC 62321:2008, GC-MS	N.D.	5
二溴二苯醚	mg/kg	IEC 62321:2008, GC-MS	N.D.	5
三溴二苯醚	mg/kg	IEC 62321:2008, GC-MS	N.D.	5
四溴二苯醚	mg/kg	IEC 62321:2008, GC-MS	N.D.	5
五溴二苯醚	mg/kg	IEC 62321:2008, GC-MS	N.D.	5
六溴二苯醚	mg/kg	IEC 62321:2008, GC-MS	N.D.	5
七溴二苯醚	mg/kg	IEC 62321:2008, GC-MS	N.D.	5
八溴二苯醚	mg/kg	IEC 62321:2008, GC-MS	N.D.	5
九溴二苯醚	mg/kg	IEC 62321:2008, GC-MS	N.D.	5
十溴二苯醚	mg/kg	IEC 62321:2008, GC-MS	N.D.	5

This document is issued by the Company under its General Conditions of Service printed overleaf or available on request and accessible at [http://www.sgs.com/terms\\_and\\_conditions.htm](http://www.sgs.com/terms_and_conditions.htm). Attention is drawn to the limitation of liability, indemnification and jurisdiction issues defined therein. Any holder of this document is advised that information contained hereon reflects the Company's findings at the time of its intervention only and within the limits of Client's instructions, if any. The Company's sole responsibility is to its Client and this document does not generate parties to a transaction from exercising all their rights and obligations under the transaction documents. Any unauthorized alteration, forgery or falsification of the content or appearance of this document is unlawful and offenders may be prosecuted to the fullest extent of the law.



SGS Standards Technical Services Co., Ltd.  
Guangzhou Testing Service Center Chemical Laboratory

138 Kazhu Road, Sointech Park, Guangzhou Economic & Technology Development District, Guangzhou, China 510663 | (86-20) 82155555 | (86-20) 82075125 | www.cn.sgs.com  
中国·广州·经济技术开发区科学城科珠路198号 邮编: 510663 | (86-20) 82155555 | (86-20) 82075125 | e: sgs.china@sgs.com

### 注释:

1. mg/kg = ppm
2. N.D. = 未检出 (< MDL)
3. MDL = 方法检测限
4. "-" = 未规定
5. 多溴二苯醚 = 多溴联苯醚

### Phthalate(s) (邻苯二甲酸酯)

测试项目	单位	测试方法 (参考)	测试结果	MDL
邻苯二甲酸二甲酯(DMP)	%(w/w)	EN14372: 2004, GC-MS	N.D.	0.005
邻苯二甲酸二乙酯(DEP)	%(w/w)	EN14372: 2004, GC-MS	N.D.	0.005
邻苯二甲酸二丁酯(DBP)	%(w/w)	EN14372: 2004, GC-MS	N.D.	0.003
邻苯二甲酸丁苄酯(BBP)	%(w/w)	EN14372: 2004, GC-MS	N.D.	0.003
邻苯二甲酸二(2-乙基己基)酯 (DEHP)	%(w/w)	EN14372: 2004, GC-MS	N.D.	0.003
邻苯二甲酸二异壬酯(DINP)	%(w/w)	EN14372: 2004, GC-MS	N.D.	0.01
邻苯二甲酸二正辛酯(DNOP)	%(w/w)	EN14372: 2004, GC-MS	N.D.	0.003
邻苯二甲酸二异癸酯(DIDP)	%(w/w)	EN14372: 2004, GC-MS	N.D.	0.01
邻苯二甲酸二异丁酯(DIBP)	%(w/w)	EN14372: 2004, GC-MS	N.D.	0.005
邻苯二甲酸二正壬酯(DNP)	%(w/w)	EN14372: 2004, GC-MS	N.D.	0.005
邻苯二甲酸二异辛酯(DIOP)	%(w/w)	EN14372: 2004, GC-MS	N.D.	0.01
邻苯二甲酸二正丙酯(DPrP)	%(w/w)	EN14372: 2004, GC-MS	N.D.	0.005
邻苯二甲酸二环己酯(DCHP)	%(w/w)	EN14372: 2004, GC-MS	N.D.	0.005
邻苯二甲酸二正戊酯(DPP)	%(w/w)	EN14372: 2004, GC-MS	N.D.	0.005
邻苯二甲酸二苄酯(DBzP)	%(w/w)	EN14372: 2004, GC-MS	N.D.	0.005
邻苯二甲酸二苯酯 (DPhP)	%(w/w)	EN14372: 2004, GC-MS	N.D.	0.005

### 注释:

1. mg/kg = ppm; 0.1%=1000ppm
2. MDL = 方法检测限
3. N.D.= 未检出 (< MDL)

This document is issued by the Company under its General Conditions of Service printed overleaf or available on request and accessible at [http://www.sgs.com/terms\\_and\\_conditions.htm](http://www.sgs.com/terms_and_conditions.htm). Attention is drawn to the limitation of liability, indemnification and jurisdiction issues defined therein. Any holder of this document is advised that information contained hereon reflects the Company's findings at the time of its intervention only and within the limits of Client's instructions, if any. The Company's sole responsibility is to its Client and this document does not generate parties to a transaction from exercising all their rights and obligations under the transaction documents. Any unauthorized alteration, forgery or falsification of the content or appearance of this document is unlawful and offenders may be prosecuted to the fullest extent of the law.

Unless otherwise stated, the results shown in this test report refer only to the sample(s) tested. This document cannot be reproduced except in full, without prior approval of the Company.



参考: 1907/2006/EC 的修正指令——552/2009/EC 第 51/52 条(前身为 2005/84/EC)的要求:

对于 DBP, BBP, DEHP

(1)不允许 DBP, BBP, DEHP 质量浓度高于 0.1%的可塑性物料用于玩具和儿童护理品。

(2)当玩具和儿童护理品中的可塑性物料含 DBP, BBP, DEHP 质量浓度高于 0.1%时, 不得投放市场。

对于 DINP, DNOP, DIDP

(1)不允许 DINP, DNOP, DIDP 质量浓度高于 0.1%的可塑性物料用于可放入儿童口中的玩具和儿童护理品。

(2)当可放入儿童口中的玩具和儿童护理品中的可塑性物料含 DINP, DNOP, DIDP 质量浓度高于 0.1%时, 不得投放市场。

### PAHs (多环芳烃)

测试项目	单位	测试方法	测试结果	MDL
萘 (NAP)	mg/kg	ZEK 01.2-08, GC-MS	N.D.	0.2
芴烯 (ANY)	mg/kg	ZEK 01.2-08, GC-MS	N.D.	0.2
芴 (ANA)	mg/kg	ZEK 01.2-08, GC-MS	N.D.	0.2
芴 (FLU)	mg/kg	ZEK 01.2-08, GC-MS	N.D.	0.2
菲 (PHE)	mg/kg	ZEK 01.2-08, GC-MS	N.D.	0.2
蒽 (ANT)	mg/kg	ZEK 01.2-08, GC-MS	N.D.	0.2
荧蒽 (FLT)	mg/kg	ZEK 01.2-08, GC-MS	N.D.	0.2
芘 (PYR)	mg/kg	ZEK 01.2-08, GC-MS	N.D.	0.2
苯并 (a) 蒽 (BaA)	mg/kg	ZEK 01.2-08, GC-MS	N.D.	0.2
屈 (CHR)	mg/kg	ZEK 01.2-08, GC-MS	N.D.	0.2
苯并 (b) 荧蒽 (BbF)	mg/kg	ZEK 01.2-08, GC-MS	N.D.	0.2
苯并 (k) 荧蒽 (BkF)	mg/kg	ZEK 01.2-08, GC-MS	N.D.	0.2
苯并 (a) 芘 (BaP)	mg/kg	ZEK 01.2-08, GC-MS	N.D.	0.2
茚苯 (1,2,3-c,d) 芘 (IPY)	mg/kg	ZEK 01.2-08, GC-MS	N.D.	0.2
二苯并 (a,h) 蒽 (DBA)	mg/kg	ZEK 01.2-08, GC-MS	N.D.	0.2
苯并 (g,h,i) 芘 (BPE)	mg/kg	ZEK 01.2-08, GC-MS	N.D.	0.2
16 项 PAHs 总量 (根据 US EPA)	mg/kg	-	N.D.	-

注释:

1. mg/kg = ppm
2. N.D. = 未检出 (< MDL)
3. MDL = 方法检测限

This document is issued by the Company under its General Conditions of Service printed overleaf or available on request and accessible at [http://www.sgs.com/terms\\_and\\_conditions.htm](http://www.sgs.com/terms_and_conditions.htm). Attention is drawn to the limitation of liability, indemnification and jurisdiction issues defined therein. Any holder of this document is advised that information contained hereon reflects the Company's findings at the time of its intervention only and within the limits of Client's instructions, if any. The Company's sole responsibility is to its Client and this document does not generate parties to a transaction from exercising all their rights and obligations under the transaction documents. Any unauthorized alteration, forgery or falsification of the content or appearance of this document is unlawful and offenders may be prosecuted to the fullest extent of the law. Unless otherwise stated, the results shown in this test report refer only to the sample(s) tested. This document cannot be reproduced except in full, without prior approval of the Company.



**ZEK 01.2-08: 产品中 PAHs 含量的最大浓度限值**

参数	1 类	2 类	3 类
	设计意图为放入口中的材料, 以及 36 个月以下幼儿的玩具上与皮肤接触的材料	未在 1 类规定中涵盖的材料, 且可能与皮肤长期接触的材料 (接触时间大于 30 秒)。	未在 1 和 2 类规定中涵盖的材料, 且可能与皮肤短期接触的材料 (接触时间小于等于 30 秒)
苯并(a)芘含量 (mg/kg)	<MDL (<0.2)***	1	20
16 项 PAHs (US EPA) 总量 (mg/kg)**	<MDL (<0.2)***	10	200

备注: \*\* = 仅物质浓度大于 0.2ppm 时才用于计算 16 项多环芳烃总量。

\*\*\* = 若设计意图为放入口中的材料的测试结果大于 1 类限值但不超过 2 类限值, 需再依据 DIN EN 1186ff 及 §64 LFGB 80.30-1 进行 PAH 的迁移性测试并根据相关食品法规进行判定。

**全氟辛酸 (PFOA) 和全氟辛烷磺酸 (PFOS)**

测试项目	单位	测试方法 (参考)	测试结果	MDL
全氟辛酸 (PFOA)	mg/kg	EPA 3550C: 2007, LC-MS	N.D.	10
全氟辛烷磺酸 (PFOS)				
PFOS - 酸				
PFOS - 金属盐	mg/kg	EPA 3550C: 2007, LC-MS	N.D.	10
PFOS - 胺				

注释:

1. mg/kg = ppm
2. N.D. = 未检出 (< MDL)
3. MDL = 方法检测限

参考: 1907/2006/EC 的修正指令——552/2009/EC 第 53 条(前身为 2006/122/EC)的要求:

- (1) PFOS 比重等于或高于 0.005% 的物料或者配置品, 不得使用或者投放市场。
- (2) PFOS 比重等于或高于 0.1% 的半成品, 成品或者部件; 以及 PFOS 含量等于或高于 1µg/m<sup>2</sup> 的纺织物或其他带涂层物料, 不得投放市场。

**四溴双酚 A (TBBP-A)**

测试项目	单位	测试方法	测试结果	MDL
四溴双酚 A (TBBP-A)	mg/kg	EPA 3550C: 2007, GC-MS	N.D.	10

This document is issued by the Company under its General Conditions of Service printed overleaf or available on request and accessible at [http://www.sgs.com/terms\\_and\\_conditions.htm](http://www.sgs.com/terms_and_conditions.htm). Attention is drawn to the limitation of liability, indemnification and jurisdiction issues defined therein. Any holder of this document is advised that information contained hereon reflects the Company's findings at the time of its intervention only and within the limits of Client's instructions, if any. The Company's sole responsibility is to its Client and this document does not generate parties to a transaction from exercising all their rights and obligations under the transaction documents. Any unauthorized alteration, forgery or falsification of the content or appearance of this document is unlawful and offenders may be prosecuted to the fullest extent of the law. Unless otherwise stated, the results shown in this test report refer only to the sample(s) tested. This document cannot be reproduced except in full, without prior approval of the Company.



## 测试报告

No. GZ1005049280/CHEM

日期: 2010 年 5 月 17 日

第6页, 共14页

注释:

1. mg/kg = ppm
2. N.D. = 未检出 (< MDL)
3. MDL = 方法检测限

### 有机锡

测试项目	单位	测试方法 (参考)	测试结果	MDL
DBT (二丁基锡)	mg/kg	ISO 17353:2004, GC-MS	N.D.	0.5
TBT (三丁基锡)	mg/kg	ISO 17353:2004, GC-MS	N.D.	0.5
TPhT (三苯基锡)	mg/kg	ISO 17353:2004, GC-MS	N.D.	0.5
DOT (二辛基锡)	mg/kg	ISO 17353:2004, GC-MS	N.D.	0.5

注释:

1. mg/kg = ppm
2. N.D. = 未检出 (< MDL)
3. MDL = 方法检测限

### 苯并三唑

测试项目	单位	测试方法 (参考)	测试结果	MDL
UV-320: 2-(2-羟基-3,5-二叔丁基苯基)-(2H)苯并三唑	mg/kg	EPA 3550C : 2007, GC-MS	N.D.	5
UV-350: 2-(2-羟基-3-异丁基-5-叔丁基苯基)苯并三唑	mg/kg	EPA 3550C : 2007, GC-MS	N.D.	5
UV-328: 2-(2'-羟基-3',5'-二叔戊基苯基)苯并三唑	mg/kg	EPA 3550C : 2007, GC-MS	N.D.	5
UV-327: 2-(2'-羟基-3',5'-二叔丁基苯基)-5-氯代苯并三唑;	mg/kg	EPA 3550C : 2007, GC-MS	N.D.	5

注释:

1. mg/kg = ppm
2. N.D. = 未检出 (< MDL)
3. MDL = 方法检测限

This document is issued by the Company under its General Conditions of Service printed overleaf or available on request and accessible at [http://www.sgs.com/terms\\_and\\_conditions.htm](http://www.sgs.com/terms_and_conditions.htm). Attention is drawn to the limitation of liability, indemnification and jurisdiction issues defined therein. Any holder of this document is advised that information contained hereon reflects the Company's findings at the time of its intervention only and within the limits of Client's instructions, if any. The Company's sole responsibility is to its Client and this document does not generate parties to a transaction from exercising all their rights and obligations under the transaction documents. Any unauthorized alteration, forgery or falsification of the content or appearance of this document is unlawful and offenders may be prosecuted to the fullest extent of the law. Unless otherwise stated, the results shown in this test report refer only to the sample(s) tested. This document cannot be reproduced except in full, without prior approval of the Company.



198 Kazhu Road, Sointech Park, Guangzhou Economic & Technology Development District, Guangzhou, China 510663 | (86-20) 82155555 | (86-20) 82075125 | www.cn.sgs.com  
 中国·广州·经济技术开发区科学城科珠路198号 邮编: 510663 | (86-20) 82155555 | (86-20) 82075125 | e: sgs.china@sgs.com

## 测试报告

No. GZ1005049280/CHEM

日期: 2010 年 5 月 17 日

第7页, 共14页

### 甲醛

测试项目	单位	测试方法 (参考)	测试结果	MDL
游离和水解甲醛	mg/kg	ISO 14184-1:1998, UV-Vis	N.D.	20

注释:

1. mg/kg = ppm
2. N.D. = 未检出 (< MDL)
3. MDL = 方法检测限
4. 本测试报告内容是参照报告编号为 GZ1005049279/CHEM 的中文译本, 中英文版本如有歧异, 概以英文版为准。

This document is issued by the Company under its General Conditions of Service printed overleaf or available on request and accessible at [http://www.sgs.com/terms\\_and\\_conditions.htm](http://www.sgs.com/terms_and_conditions.htm). Attention is drawn to the limitation of liability, indemnification and jurisdiction issues defined therein. Any holder of this document is advised that information contained hereon reflects the Company's findings at the time of its intervention only and within the limits of Client's instructions, if any. The Company's sole responsibility is to its Client and this document does not generate parties to a transaction from exercising all their rights and obligations under the transaction documents. Any unauthorized alteration, forgery or falsification of the content or appearance of this document is unlawful and offenders may be prosecuted to the fullest extent of the law.

Unless otherwise stated, the results shown in this test report refer only to the sample(s) tested. This document cannot be reproduced except in full, without prior approval of the Company.



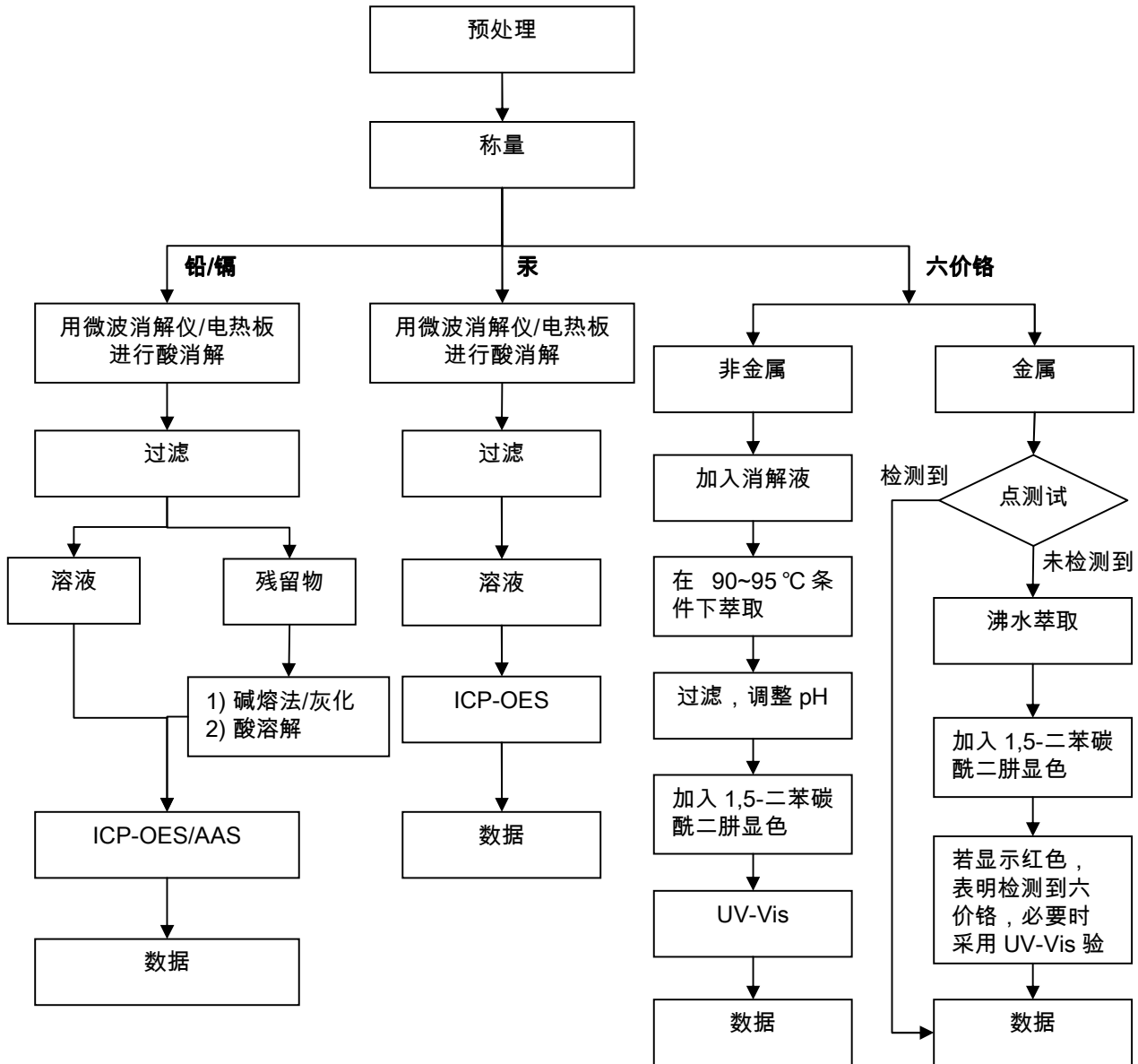
SGS (Shanghai) Standards Technical Services Co., Ltd.  
Guangzhou SGS Environmental & Consumer Chemical Laboratory

138 Kazhu Road, Sointech Park, Guangzhou Economic & Technology Development District, Guangzhou, China 510663 | (86-20) 82155555 | (86-20) 82075125 | www.cn.sgs.com  
中国·广州·经济技术开发区科学城科珠路198号 邮编: 510663 | (86-20) 82155555 | (86-20) 82075125 | e: sgs.china@sgs.com

### 附件

### 测试流程图

- 1) 分析人员: 汪丹
- 2) 项目负责人: 余奕东
- 3) 样品按照下述流程被完全消解 (六价铬除外)。

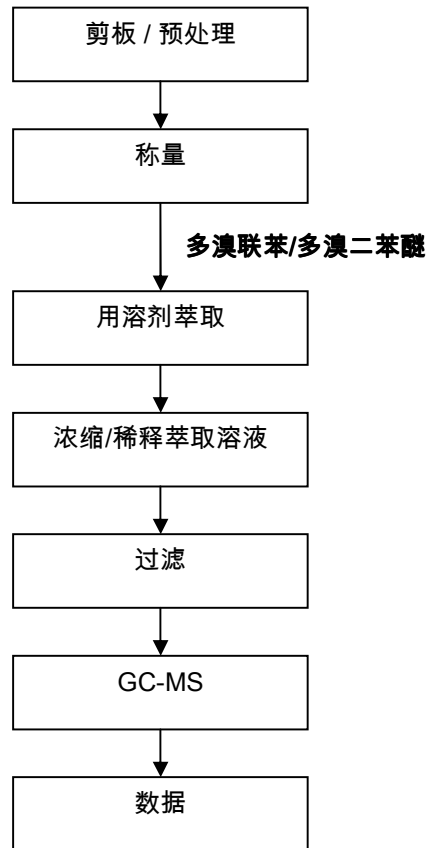


This document is issued by the Company under its General Conditions of Service printed overleaf or available on request and accessible at [http://www.sgs.com/terms\\_and\\_conditions.htm](http://www.sgs.com/terms_and_conditions.htm). Attention is drawn to the limitation of liability, indemnification and jurisdiction issues defined therein. Any holder of this document is advised that information contained hereon reflects the Company's findings at the time of its intervention only and within the limits of Client's instructions, if any. The Company's sole responsibility is to its Client and this document does not generate parties to a transaction from exercising all their rights and obligations under the transaction documents. Any unauthorized alteration, forgery or falsification of the content or appearance of this document is unlawful and offenders may be prosecuted to the fullest extent of the law. Unless otherwise stated, the results shown in this test report refer only to the sample(s) tested. This document cannot be reproduced except in full, without prior approval of the Company.



## 测试流程图

- 1) 分析人员: 余晓璐
- 2) 项目负责人: 杨伟兴



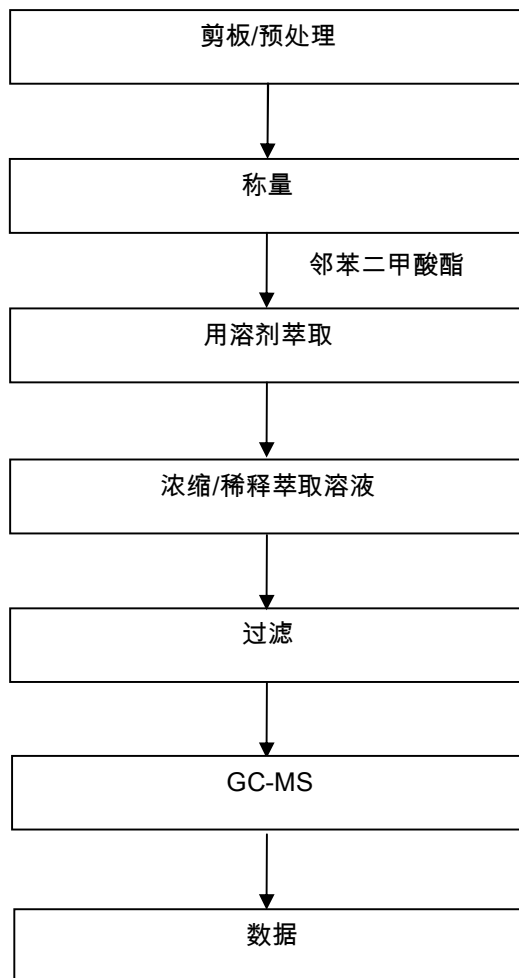
This document is issued by the Company under its General Conditions of Service printed overleaf or available on request and accessible at [http://www.sgs.com/terms\\_and\\_conditions.htm](http://www.sgs.com/terms_and_conditions.htm). Attention is drawn to the limitation of liability, indemnification and jurisdiction issues defined therein. Any holder of this document is advised that information contained hereon reflects the Company's findings at the time of its intervention only and within the limits of Client's instructions, if any. The Company's sole responsibility is to its Client and this document does not generate parties to a transaction from exercising all their rights and obligations under the transaction documents. Any unauthorized alteration, forgery or falsification of the content or appearance of this document is unlawful and offenders may be prosecuted to the fullest extent of the law.



附件

测试流程图

- 1) 分析人员: 赵瑞娜
- 2) 项目负责人: 杨伟兴

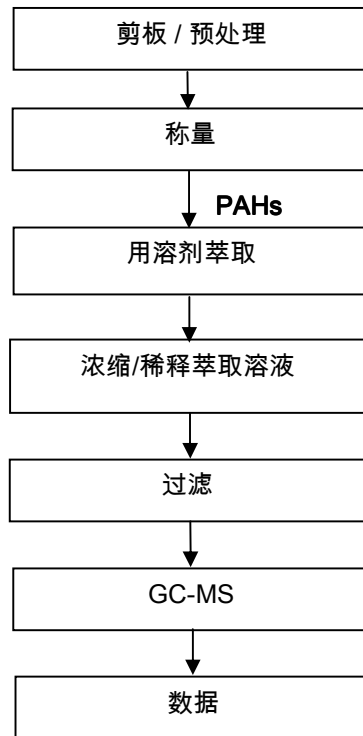


This document is issued by the Company under its General Conditions of Service printed overleaf or available on request and accessible at [http://www.sgs.com/terms\\_and\\_conditions.htm](http://www.sgs.com/terms_and_conditions.htm). Attention is drawn to the limitation of liability, indemnification and jurisdiction issues defined therein. Any holder of this document is advised that information contained hereon reflects the Company's findings at the time of its intervention only and within the limits of Client's instructions, if any. The Company's sole responsibility is to its Client and this document does not generate parties to a transaction from exercising all their rights and obligations under the transaction documents. Any unauthorized alteration, forgery or falsification of the content or appearance of this document is unlawful and offenders may be prosecuted to the fullest extent of the law. Unless otherwise stated, the results shown in this test report refer only to the sample(s) tested. This document cannot be reproduced except in full, without prior approval of the Company.



## 测试流程图

- 1) 分析人员: 余晓璐
- 2) 项目负责人: 杨伟兴



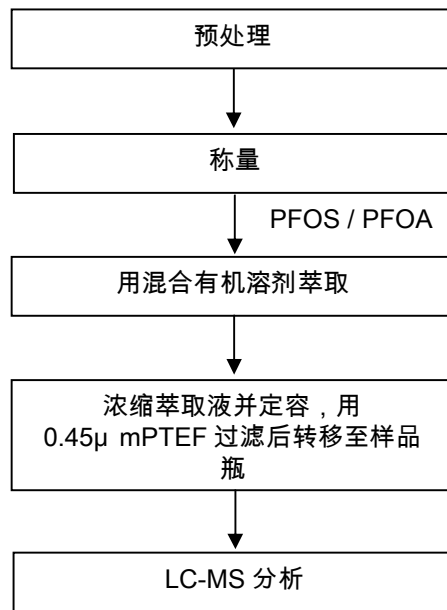
This document is issued by the Company under its General Conditions of Service printed overleaf or available on request and accessible at [http://www.sgs.com/terms\\_and\\_conditions.htm](http://www.sgs.com/terms_and_conditions.htm). Attention is drawn to the limitation of liability, indemnification and jurisdiction issues defined therein. Any holder of this document is advised that information contained hereon reflects the Company's findings at the time of its intervention only and within the limits of Client's instructions, if any. The Company's sole responsibility is to its Client and this document does not generate parties to a transaction from exercising all their rights and obligations under the transaction documents. Any unauthorized alteration, forgery or falsification of the content or appearance of this document is unlawful and offenders may be prosecuted to the fullest extent of the law.

Unless otherwise stated, the results shown in this test report refer only to the sample(s) tested. This document cannot be reproduced except in full, without prior approval of the Company.

附件

测试流程图

- 1) 分析人员: 黄少婵
- 2) 项目负责人: 杨伟兴



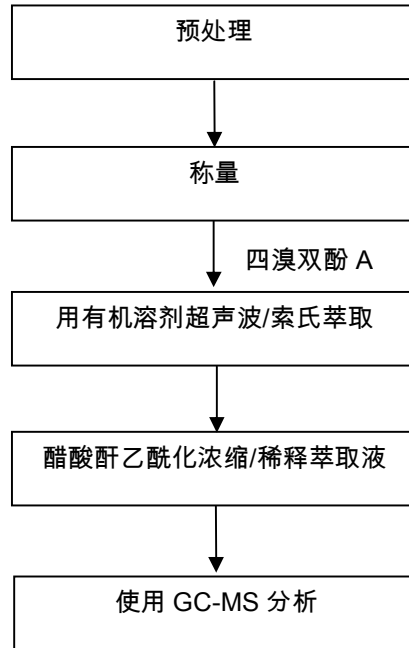
This document is issued by the Company under its General Conditions of Service printed overleaf or available on request and accessible at [http://www.sgs.com/terms\\_and\\_conditions.htm](http://www.sgs.com/terms_and_conditions.htm). Attention is drawn to the limitation of liability, indemnification and jurisdiction issues defined therein. Any holder of this document is advised that information contained hereon reflects the Company's findings at the time of its intervention only and within the limits of Client's instructions, if any. The Company's sole responsibility is to its Client and this document does not generate parties to a transaction from exercising all their rights and obligations under the transaction documents. Any unauthorized alteration, forgery or falsification of the content or appearance of this document is unlawful and offenders may be prosecuted to the fullest extent of the law. Unless otherwise stated, the results shown in this test report refer only to the sample(s) tested. This document cannot be reproduced except in full, without prior approval of the Company.



### 附件

- 1) 分析人员: 余晓璐
- 2) 项目负责人: 杨伟兴

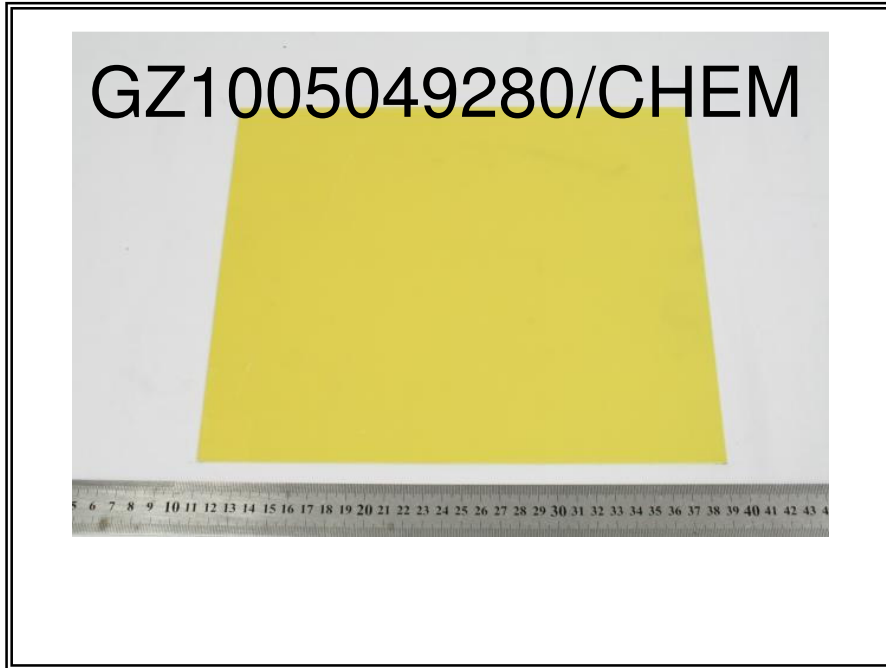
### 测试流程图



This document is issued by the Company under its General Conditions of Service printed overleaf or available on request and accessible at [http://www.sgs.com/terms\\_and\\_conditions.htm](http://www.sgs.com/terms_and_conditions.htm). Attention is drawn to the limitation of liability, indemnification and jurisdiction issues defined therein. Any holder of this document is advised that information contained hereon reflects the Company's findings at the time of its intervention only and within the limits of Client's instructions, if any. The Company's sole responsibility is to its Client and this document does not generate parties to a transaction from exercising all their rights and obligations under the transaction documents. Any unauthorized alteration, forgery or falsification of the content or appearance of this document is unlawful and offenders may be prosecuted to the fullest extent of the law. Unless otherwise stated, the results shown in this test report refer only to the sample(s) tested. This document cannot be reproduced except in full, without prior approval of the Company.



样品照片:



此图片仅限于随 SGS 正本报告使用

\*\*\* 报告完 \*\*\*

This document is issued by the Company under its General Conditions of Service printed overleaf or available on request and accessible at [http://www.sgs.com/terms\\_and\\_conditions.htm](http://www.sgs.com/terms_and_conditions.htm). Attention is drawn to the limitation of liability, indemnification and jurisdiction issues defined therein. Any holder of this document is advised that information contained hereon reflects the Company's findings at the time of its intervention only and within the limits of Client's instructions, if any. The Company's sole responsibility is to its Client and this document does not generate parties to a transaction from exercising all their rights and obligations under the transaction documents. Any unauthorized alteration, forgery or falsification of the content or appearance of this document is unlawful and offenders may be prosecuted to the fullest extent of the law. Unless otherwise stated, the results shown in this test report refer only to the sample(s) tested. This document cannot be reproduced except in full, without prior approval of the Company.

